

## Product datasheet for **TA342601**

### UBTD1 Rabbit Polyclonal Antibody

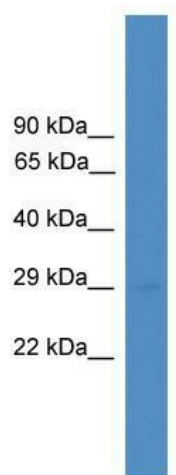
#### Product data:

Product Type:	Primary Antibodies
Applications:	WB
Recommended Dilution:	WB
Reactivity:	Human
Host:	Rabbit
Isotype:	IgG
Clonality:	Polyclonal
Immunogen:	The immunogen for anti-UBTD1 antibody: synthetic peptide directed towards the middle region of human UBTD1. Synthetic peptide located within the following region: TEESLEPPEPPPSVRREFPLKVRRLSTGKDVRLSASLPDTVGQLKRQLHA
Formulation:	Liquid. Purified antibody supplied in 1x PBS buffer with 0.09% (w/v) sodium azide and 2% sucrose. <i>Note that this product is shipped as lyophilized powder to China customers.</i>
Conjugation:	Unconjugated
Storage:	Store at -20°C as received.
Stability:	Stable for 12 months from date of receipt.
Predicted Protein Size:	26 kDa
Gene Name:	ubiquitin domain containing 1
Database Link:	<a href="#">NP_079230</a> <a href="#">Entrez Gene 80019 Human Q9HAC8</a>
Background:	The function of UBTD1 remains unknown.
Synonyms:	FLJ11807
Note:	Immunogen Sequence Homology: Dog: 100%; Pig: 100%; Rat: 100%; Horse: 100%; Human: 100%; Mouse: 100%; Bovine: 100%; Rabbit: 100%; Guinea pig: 100%; Zebrafish: 86%
Protein Families:	Druggable Genome



[View online »](#)

Product images:



WB Suggested Anti-UBTD1 Antibody Titration:  
0.2-1 ug/ml; ELISA Titer: 1:1562500; Positive  
Control: Jurkat cell lysate