

## Product datasheet for **TA342599**

### UBL4A Rabbit Polyclonal Antibody

#### Product data:

Product Type:	Primary Antibodies
Applications:	WB
Recommended Dilution:	WB
Reactivity:	Human
Host:	Rabbit
Isotype:	IgG
Clonality:	Polyclonal
Immunogen:	The immunogen for anti-UBL4A antibody: synthetic peptide directed towards the C terminal of human UBL4A. Synthetic peptide located within the following region: SAADASRVLEQLQRDYERSLSRLTLDDIERLASRFLHPEVTETMEKGFSSK
Formulation:	Liquid. Purified antibody supplied in 1x PBS buffer with 0.09% (w/v) sodium azide and 2% sucrose. <i>Note that this product is shipped as lyophilized powder to China customers.</i>
Conjugation:	Unconjugated
Storage:	Store at -20°C as received.
Stability:	Stable for 12 months from date of receipt.
Predicted Protein Size:	18 kDa
Gene Name:	ubiquitin like 4A
Database Link:	<a href="#">NP_055050</a> <a href="#">Entrez Gene 8266 Human P11441</a>
Background:	UBL4A is a component of the BAT3 complex, a multiprotein complex involved in the post-translational delivery of tail-anchored (TA) membrane proteins to the endoplasmic reticulum membrane. UBL4A is the TA membrane proteins, also named type II transmembrane proteins, contain a single C-terminal transmembrane region. The complex acts by facilitating TA proteins capture by ASNA1/TRC40: it is recruited to ribosomes synthesizing membrane proteins, interacts with the transmembrane region of newly released TA proteins, and transfers them to ASNA1/TRC40 for targeting.



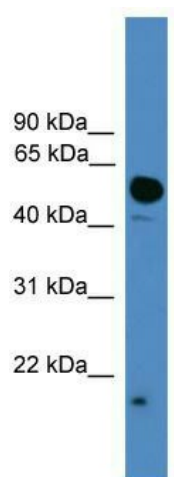
[View online »](#)

**Synonyms:** DX254E; DXS254E; G6PD; GDX; GET5; MDY2; TMA24; UBL4

**Note:** Immunogen Sequence Homology: Human: 100%; Dog: 93%; Pig: 92%; Horse: 92%; Rat: 86%; Mouse: 86%; Bovine: 86%; Rabbit: 79%; Guinea pig: 79%

**Protein Families:** Druggable Genome

### Product images:



WB Suggested Anti-UBL4A Antibody Titration: 0.2-1 ug/ml; ELISA Titer: 1:312500; Positive Control: HepG2 cell lysate