

Product datasheet for **TA342596**

ISG15 Rabbit Polyclonal Antibody

Product data:

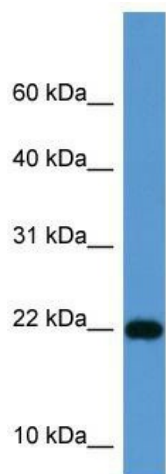
Product Type:	Primary Antibodies
Applications:	IHC, WB
Recommended Dilution:	WB, IHC
Reactivity:	Human, Mouse
Host:	Rabbit
Isotype:	IgG
Clonality:	Polyclonal
Immunogen:	The immunogen for anti-ISG15 antibody: synthetic peptide directed towards the middle region of human ISG15. Synthetic peptide located within the following region: EPLSILVRNNKGRSSTYEVRLTQTV AHLKQQVSGLEGVQDDLFWLTFEGK
Formulation:	Liquid. Purified antibody supplied in 1x PBS buffer with 0.09% (w/v) sodium azide and 2% sucrose. <i>Note that this product is shipped as lyophilized powder to China customers.</i>
Conjugation:	Unconjugated
Storage:	Store at -20°C as received.
Stability:	Stable for 12 months from date of receipt.
Predicted Protein Size:	17 kDa
Gene Name:	ISG15 ubiquitin-like modifier
Database Link:	NP_005092 Entrez Gene 100038882 Mouse Entrez Gene 9636 Human P05161
Background:	ISG15 is a ubiquitin-like protein that becomes conjugated to many cellular proteins upon activation by interferon-alpha.
Synonyms:	G1P2; hUCRP; IFI15; IMD38; IP17; UCRP
Note:	Immunogen Sequence Homology: Human: 100%; Dog: 86%; Goat: 86%; Horse: 86%; Sheep: 86%; Bovine: 86%; Pig: 79%; Rabbit: 79%
Protein Families:	Druggable Genome, Secreted Protein



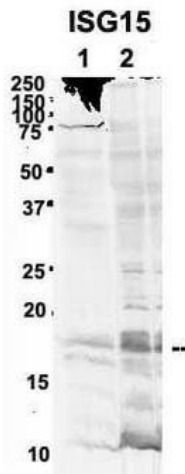
[View online »](#)

Protein Pathways: RIG-I-like receptor signaling pathway

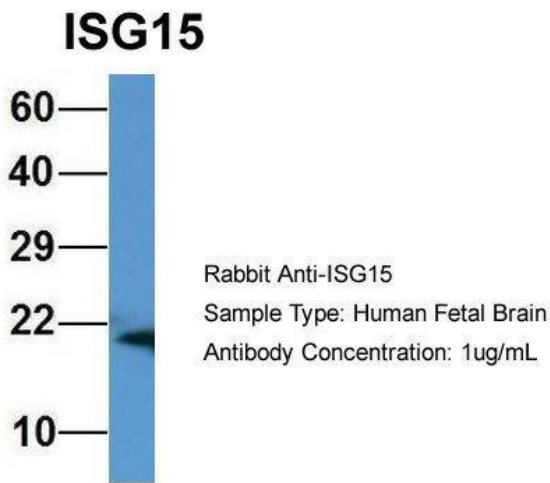
Product images:



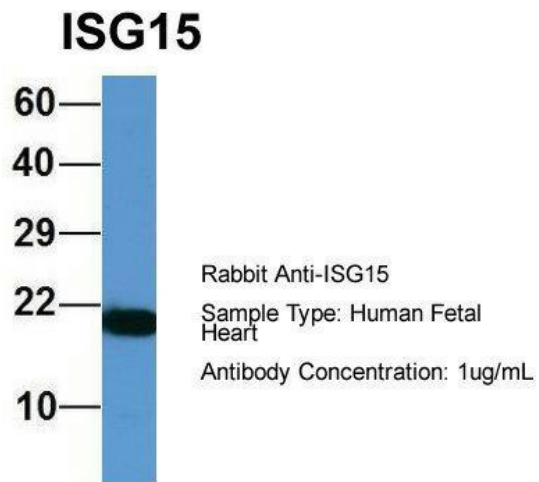
WB Suggested Anti-ISG15 Antibody Titration: 0.2-1 ug/ml; ELISA Titer: 1:1562500; Positive Control: Human kidney



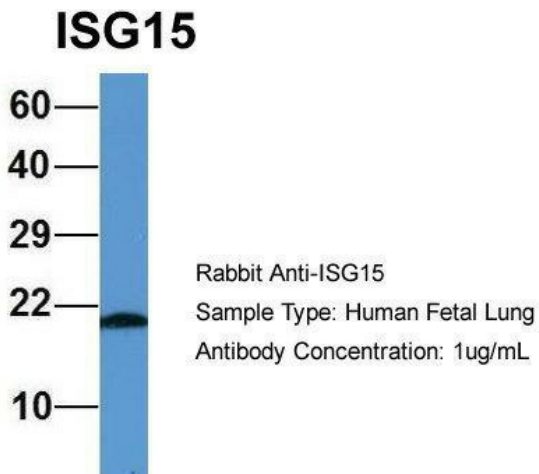
Sample Type: 1. Human NT-2 cells (60ug); 2. mouse brain extracts (80ug); Primary Antibody Dilution:2 ug/ml; Secondary Antibody: IRDye 800CW goat anti-rabbit from Li-COR Bioscience; Secondary Antibody Dilution:1: 20,000; Image Submitted by: Yuzhi Chen; Uni



Host: Rabbit; Target Name: ISG15; Sample Tissue: Human Fetal Brain; Antibody Dilution: 1.0 ug/ml

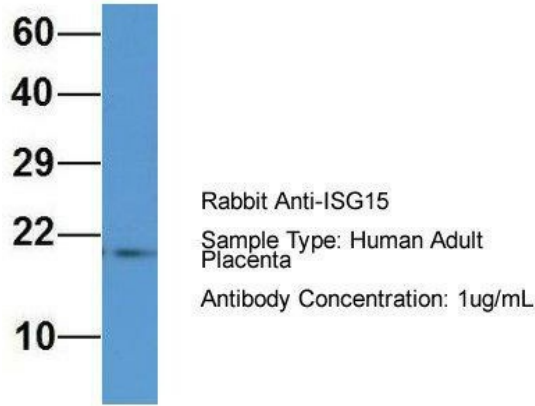


Host: Rabbit; Target Name: ISG15; Sample Tissue: Human Fetal Heart; Antibody Dilution: 1.0 ug/ml



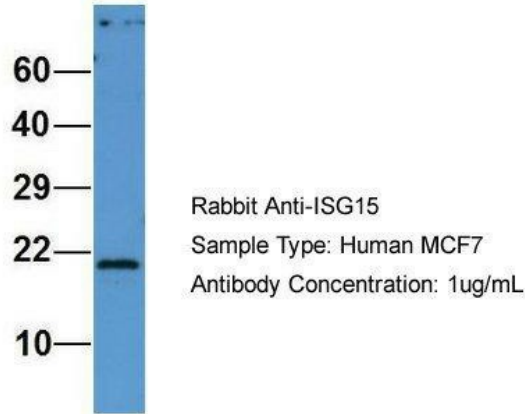
Host: Rabbit; Target Name: ISG15; Sample Tissue: Human Fetal Lung; Antibody Dilution: 1.0 ug/ml

ISG15



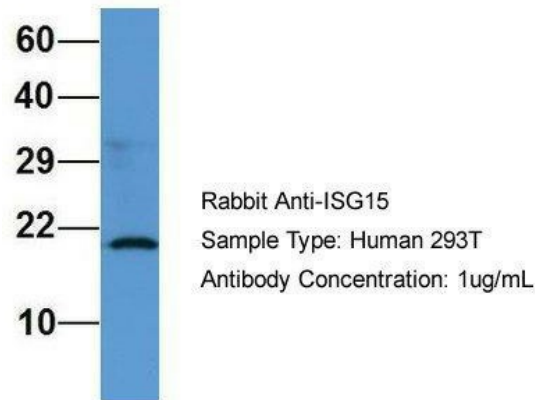
Host: Rabbit; Target Name: ISG15; Sample Tissue: Human Adult Placenta; Antibody Dilution: 1.0 µg/ml

ISG15



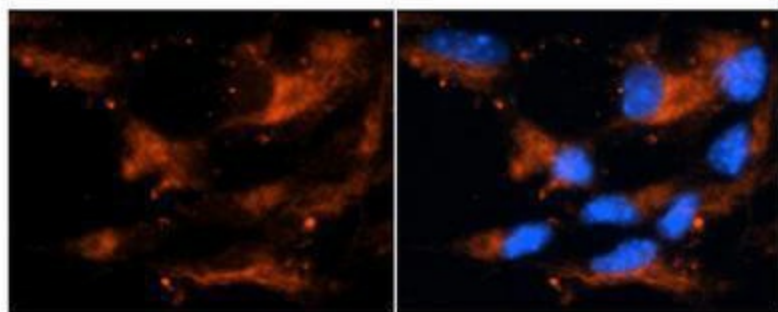
Host: Rabbit; Target Name: ISG15; Sample Tissue: Human MCF7; Antibody Dilution: 1.0 µg/ml ISG15 is supported by BioGPS gene expression data to be expressed in MCF7

ISG15



Host: Rabbit; Target Name: ISG15; Sample Tissue: Human 293T; Antibody Dilution: 1.0 µg/ml ISG15 is supported by BioGPS gene expression data to be expressed in HEK293T

ISG15



Antibody--RED
DAPI--Blue

Application: IHC; Species+tissue/cell type: Mouse brain stem cells; Primary antibody dilution: 1:500; Secondary antibody: Goat anti-rabbit Alexa-Fluor 594; Secondary antibody dilution: 1:1000