

Product datasheet for **TA342595**

UBA6 Rabbit Polyclonal Antibody

Product data:

Product Type:	Primary Antibodies
Applications:	WB
Recommended Dilution:	WB
Reactivity:	Human
Host:	Rabbit
Isotype:	IgG
Clonality:	Polyclonal
Immunogen:	The immunogen for anti-UBA6 antibody: synthetic peptide directed towards the middle region of human UBA6. Synthetic peptide located within the following region: EVIVPHLTESYNSHRDPPEEEIPFCTLKSFPAAIEHTIQWARDKFESSFS
Formulation:	Liquid. Purified antibody supplied in 1x PBS buffer with 0.09% (w/v) sodium azide and 2% sucrose. <i>Note that this product is shipped as lyophilized powder to China customers.</i>
Conjugation:	Unconjugated
Storage:	Store at -20°C as received.
Stability:	Stable for 12 months from date of receipt.
Predicted Protein Size:	118 kDa
Gene Name:	ubiquitin like modifier activating enzyme 6
Database Link:	NP_060697 Entrez Gene 55236 Human A0AVT1
Background:	Modification of proteins with ubiquitin (UBB; MIM 191339) or ubiquitin-like proteins controls many signaling networks and requires a ubiquitin-activating enzyme (E1), a ubiquitin conjugating enzyme (E2), and a ubiquitin protein ligase (E3). UBE1L2 is an E1 enzyme that initiates the activation and conjugation of ubiquitin-like proteins (Jin et al., 2007 [PubMed 17597759]).
Synonyms:	E1-L2; MOP-4; UBE1L2

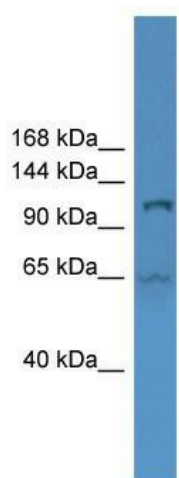


[View online »](#)

Note: Immunogen Sequence Homology: Dog: 100%; Pig: 100%; Rat: 100%; Horse: 100%; Human: 100%; Mouse: 100%; Bovine: 100%; Rabbit: 100%; Zebrafish: 100%; Guinea pig: 100%; Yeast: 83%

Protein Pathways: Ubiquitin mediated proteolysis

Product images:



WB Suggested Anti-UBA6 Antibody Titration: 0.2-1 ug/ml; ELISA Titer: 1:62500; Positive Control: HT1080 cell lysate