

## Product datasheet for **TA342594**

### APPBP1 (NAE1) Rabbit Polyclonal Antibody

#### Product data:

Product Type:	Primary Antibodies
Applications:	WB
Recommended Dilution:	WB
Reactivity:	Mouse
Host:	Rabbit
Isotype:	IgG
Clonality:	Polyclonal
Immunogen:	The immunogen for anti-Nae1 antibody is: synthetic peptide directed towards the C-terminal region of Mouse Nae1. Synthetic peptide located within the following region: ARALKEFVAKEGQG NLPVRGTIPDMIADSNKYIKLQNVYREKAKKDAAAV
Formulation:	Liquid. Purified antibody supplied in 1x PBS buffer with 0.09% (w/v) sodium azide and 2% sucrose. <i>Note that this product is shipped as lyophilized powder to China customers.</i>
Conjugation:	Unconjugated
Storage:	Store at -20°C as received.
Stability:	Stable for 12 months from date of receipt.
Predicted Protein Size:	60 kDa
Gene Name:	NEDD8 activating enzyme E1 subunit 1
Database Link:	<a href="#">NP_003896</a> <a href="#">Entrez Gene 234664 Mouse Q13564</a>
Background:	Nae1 is a regulatory subunit of the dimeric UBA3-NAE1 E1 enzyme. E1 activates NEDD8 by first adenylating its C-terminal glycine residue with ATP, thereafter linking this residue to the side chain of the catalytic cysteine, yielding a NEDD8-UBA3 thioester and free AMP. E1 finally transfers NEDD8 to the catalytic cysteine of UBE2M. Necessary for cell cycle progression through the S-M checkpoint. Overexpression of NAE1 causes apoptosis through deregulation of NEDD8 conjugation.
Synonyms:	A-116A10.1; APPBP1; HPP1; ula-1

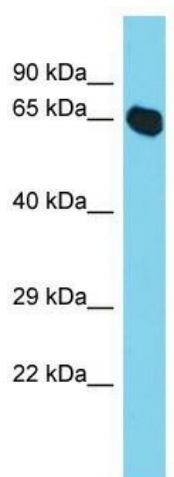


[View online »](#)

**Note:** Immunogen Sequence Homology: Dog: 100%; Pig: 100%; Rat: 100%; Horse: 100%; Human: 100%; Mouse: 100%; Bovine: 100%; Rabbit: 100%; Zebrafish: 79%

**Protein Pathways:** Alzheimer's disease

**Product images:**



Host: Rabbit; Target Name: Nae1; Sample Tissue: Mouse Lung lysates; Antibody Dilution: 1.0 ug/ml