

Product datasheet for **TA342593**

VCP Rabbit Polyclonal Antibody

Product data:

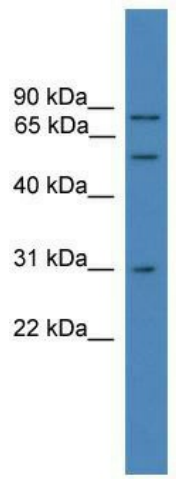
Product Type:	Primary Antibodies
Applications:	IP, WB
Recommended Dilution:	WB, IP
Reactivity:	Rat, Human, Mouse
Host:	Rabbit
Isotype:	IgG
Clonality:	Polyclonal
Immunogen:	The immunogen for anti-VCP antibody: synthetic peptide directed towards the C terminal of human VCP. Synthetic peptide located within the following region: EMFAQTLQQSRGFGSFRFPSGNQGGAGPSQGSGGGTGGSVYTEDNDDDL
Formulation:	Liquid. Purified antibody supplied in 1x PBS buffer with 0.09% (w/v) sodium azide and 2% sucrose. <i>Note that this product is shipped as lyophilized powder to China customers.</i>
Conjugation:	Unconjugated
Storage:	Store at -20°C as received.
Stability:	Stable for 12 months from date of receipt.
Predicted Protein Size:	89 kDa
Gene Name:	valosin containing protein
Database Link:	NP_009057 Entrez Gene 116643 Rat Entrez Gene 269523 Mouse Entrez Gene 7415 Human P55072
Background:	The protein encoded by this gene is a member of a family that includes putative ATP-binding proteins involved in vesicle transport and fusion, 26S proteasome function, and assembly of peroxisomes. This protein, as a structural protein, is associated with clathrin, and heat-shock protein Hsc70, to form a complex. It has been implicated in a number of cellular events that are regulated during mitosis, including homotypic membrane fusion, spindle pole body function, and ubiquitin-dependent protein degradation.
Synonyms:	ALS14; CMT2Y; HEL-220; HEL-S-70; IBMPFD; IBMPFD1; p97; TERA



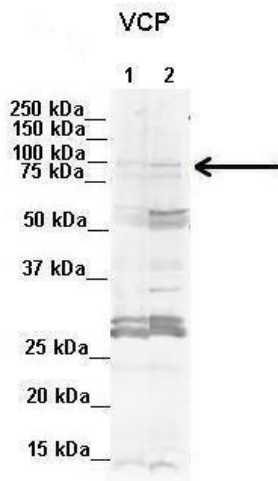
[View online »](#)

Note: Immunogen Sequence Homology: Dog: 100%; Pig: 100%; Rat: 100%; Horse: 100%; Human: 100%; Mouse: 100%; Bovine: 100%; Rabbit: 100%; Guinea pig: 100%

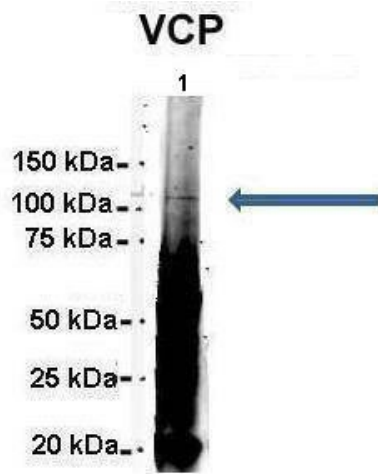
Product images:



WB Suggested Anti-VCP Antibody Titration: 0.2-1 ug/ml; ELISA Titer: 1:312500; Positive Control: Human Liver



Lanes: 1. Mouse WT brain extract (80ug) 2. Rat brain extract (80ug); Primary Antibody Dilution: 2 ug/ml; Secondary Antibody: IRDye 800CW goat anti-rabbit from Li-COR Bioscience; Secondary Antibody Dilution: 1: 20,000; Gene Name: VCP; Submitted by: Dr. Yuz



Amount and Sample Type: 500 ug Human NT2 cell lysate; Amount of IP Antibody: 6 ug; Primary Antibody: VCP; Primary Antibody Dilution: 1:500; Secondary Antibody: Goat anti-rabbit Alexa-Fluor 594; Secondary Antibody Dilution: 1:5000; Gene Name: VCP; Submitte