

Product datasheet for **TA342592**

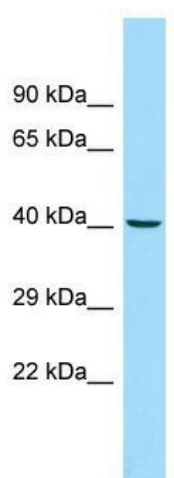
ADRM1 Rabbit Polyclonal Antibody

Product data:

Product Type:	Primary Antibodies
Applications:	WB
Recommended Dilution:	WB
Reactivity:	Human
Host:	Rabbit
Isotype:	IgG
Clonality:	Polyclonal
Immunogen:	The immunogen for anti-ADRM1 antibody is: synthetic peptide directed towards the N-terminal region of Human ADRM1. Synthetic peptide located within the following region: PSGRVYVLKFKAGSKRLFFWMQEPKTDQDEEHCRKVNEYLNNPPMPGALG
Formulation:	Liquid. Purified antibody supplied in 1x PBS buffer with 0.09% (w/v) sodium azide and 2% sucrose. <i>Note that this product is shipped as lyophilized powder to China customers.</i>
Conjugation:	Unconjugated
Storage:	Store at -20°C as received.
Stability:	Stable for 12 months from date of receipt.
Predicted Protein Size:	40 kDa
Gene Name:	adhesion regulating molecule 1
Database Link:	NP_783163 Entrez Gene 11047 Human Q16186
Background:	The protein encoded by this gene is an integral plasma membrane protein which promotes cell adhesion. The encoded protein is thought to undergo O-linked glycosylation. Expression of this gene has been shown to be induced by gamma interferon in some cancer cells. Two transcript variants encoding the same protein have been found for this gene.
Synonyms:	ARM-1; ARM1; GP110
Note:	Immunogen Sequence Homology: Dog: 100%; Pig: 100%; Rat: 100%; Horse: 100%; Human: 100%; Mouse: 100%; Bovine: 100%; Guinea pig: 100%; Zebrafish: 79%



[View online »](#)

Product images:

Host: Rabbit; Target Name: ADRM1; Sample Tissue: MCF7 Whole Cell lysates; Antibody Dilution: 1.0 ug/ml ADRM1 is supported by BioGPS gene expression data to be expressed in MCF7