

## Product datasheet for **TA342591**

### ADRM1 Rabbit Polyclonal Antibody

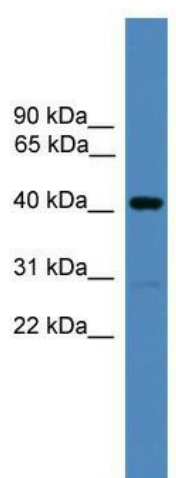
#### Product data:

Product Type:	Primary Antibodies
Applications:	WB
Recommended Dilution:	WB
Reactivity:	Human, Mouse
Host:	Rabbit
Isotype:	IgG
Clonality:	Polyclonal
Immunogen:	The immunogen for anti-ADRM1 antibody: synthetic peptide directed towards the C terminal of human ADRM1. Synthetic peptide located within the following region: QLGPLMCQFGLPAEAVEAANKGDVEAFKAMQNNAKPEQKEGDTKDKKDE
Formulation:	Liquid. Purified antibody supplied in 1x PBS buffer with 0.09% (w/v) sodium azide and 2% sucrose. <i>Note that this product is shipped as lyophilized powder to China customers.</i>
Conjugation:	Unconjugated
Storage:	Store at -20°C as received.
Stability:	Stable for 12 months from date of receipt.
Predicted Protein Size:	40 kDa
Gene Name:	adhesion regulating molecule 1
Database Link:	<a href="#">NP_783163</a> <a href="#">Entrez Gene 56436 Mouse</a> <a href="#">Entrez Gene 11047 Human</a> <a href="#">Q16186</a>
Background:	The protein encoded by this gene is an integral plasma membrane protein which promotes cell adhesion. The encoded protein is thought to undergo O-linked glycosylation. Expression of this gene has been shown to be induced by gamma interferon in some cancer cells. Two transcript variants encoding the same protein have been found for this gene.
Synonyms:	ARM-1; ARM1; GP110
Note:	Immunogen Sequence Homology: Human: 100%; Pig: 86%; Rat: 86%; Guinea pig: 86%; Mouse: 79%

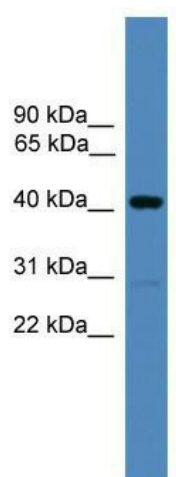


[View online »](#)

## Product images:

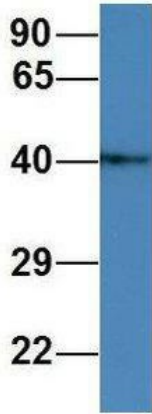


WB Suggested Anti-ADRM1 Antibody Titration:  
0.2-1 ug/ml; ELISA Titer: 1:312500; Positive  
Control: Human Placenta



WB Suggested Anti-ADRM1 antibody ; Titration: 1  
ug/ml; Positive Control: HeLa cells and cytosol  
from male mouse liver

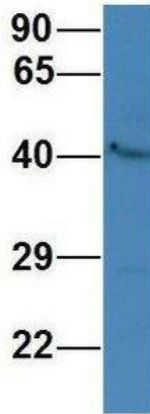
## ADRM1



Rabbit Anti-ADRM1  
Sample Type: Human Fetal Brain  
Antibody Concentration: 1ug/mL

Host: Rabbit; Target Name: ADRM1; Sample  
Tissue: Human Fetal Brain; Antibody Dilution: 1.0  
ug/ml

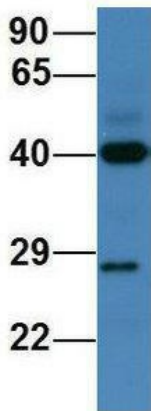
## ADRM1



Rabbit Anti-ADRM1  
Sample Type: Human Fetal  
Heart  
Antibody Concentration: 1ug/mL

Host: Rabbit; Target Name: ADRM1; Sample  
Tissue: Human Fetal Heart; Antibody Dilution: 1.0  
ug/ml

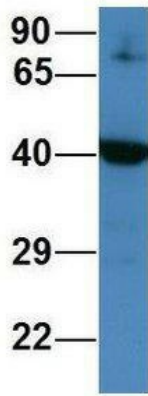
## ADRM1



Rabbit Anti-ADRM1  
Sample Type: Human Fetal Lung  
Antibody Concentration: 1ug/mL

Host: Rabbit; Target Name: ADRM1; Sample  
Tissue: Human Fetal Lung; Antibody Dilution: 1.0  
ug/ml

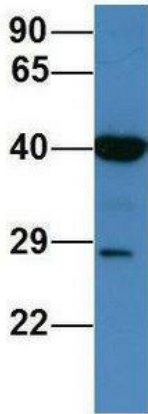
## ADRM1



Rabbit Anti-ADRM1  
Sample Type: Human 721\_B  
Antibody Concentration: 1ug/mL

Host: Rabbit; Target Name: ADRM1; Sample Tissue: Human 721\_B; Antibody Dilution: 1.0 ug/ml ADRM1 is supported by BioGPS gene expression data to be expressed in 721\_B

## ADRM1



Rabbit Anti-ADRM1  
Sample Type: Human HeLa  
Antibody Concentration: 1ug/mL

Host: Rabbit; Target Name: ADRM1; Sample Tissue: Human HeLa; Antibody Dilution: 1.0 ug/ml ADRM1 is supported by BioGPS gene expression data to be expressed in HeLa