

## Product datasheet for **TA342590**

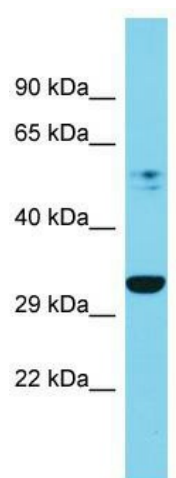
### PSMD7 Rabbit Polyclonal Antibody

#### Product data:

Product Type:	Primary Antibodies
Applications:	WB
Recommended Dilution:	WB
Reactivity:	Rat
Host:	Rabbit
Isotype:	IgG
Clonality:	Polyclonal
Immunogen:	The immunogen for anti-Psmd7 antibody is: synthetic peptide directed towards the C-terminal region of Rat Psmd7. Synthetic peptide located within the following region: LIRSVVALHNLINNKIANRDAEKKEGQEKEESKKERKDDKEKEKSDAKKE
Formulation:	Liquid. Purified antibody supplied in 1x PBS buffer with 0.09% (w/v) sodium azide and 2% sucrose. <i>Note that this product is shipped as lyophilized powder to China customers.</i>
Conjugation:	Unconjugated
Storage:	Store at -20°C as received.
Stability:	Stable for 12 months from date of receipt.
Predicted Protein Size:	35 kDa
Gene Name:	proteasome 26S subunit, non-ATPase 7
Database Link:	<a href="#">NP_002802</a> <a href="#">Entrez Gene 307821 Rat P51665</a>
Background:	The function of this protein remains unknown.
Synonyms:	MOV34; P40; Rpn8; S12
Note:	Immunogen Sequence Homology: Dog: 100%; Pig: 100%; Rat: 100%; Horse: 100%; Human: 100%; Mouse: 100%; Rabbit: 100%; Guinea pig: 100%; Bovine: 93%; Yeast: 91%; Zebrafish: 86%
Protein Families:	Druggable Genome, Protease
Protein Pathways:	Proteasome



[View online »](#)

**Product images:**

Host: Rabbit; Target Name: Psm7; Sample  
Tissue: Rat Pancreas lysates; Antibody Dilution:  
1.0 ug/ml