

Product datasheet for **TA342589**

PSMC6 Rabbit Polyclonal Antibody

Product data:

Product Type:	Primary Antibodies
Applications:	WB
Recommended Dilution:	WB
Reactivity:	Human, Mouse
Host:	Rabbit
Isotype:	IgG
Clonality:	Polyclonal
Immunogen:	The immunogen for anti-PSMC6 antibody: synthetic peptide directed towards the C terminal of human PSMC6. Synthetic peptide located within the following region: GFNGADLRNVCTEAGMFAIRADHDFVQEDFMKAVRKVADSKKLESKLDY
Formulation:	Liquid. Purified antibody supplied in 1x PBS buffer with 0.09% (w/v) sodium azide and 2% sucrose. <i>Note that this product is shipped as lyophilized powder to China customers.</i>
Conjugation:	Unconjugated
Storage:	Store at -20°C as received.
Stability:	Stable for 12 months from date of receipt.
Predicted Protein Size:	44 kDa
Gene Name:	proteasome 26S subunit, ATPase 6
Database Link:	NP_002797 Entrez Gene 67089 Mouse Entrez Gene 5706 Human P62333



[View online »](#)

Background:

The 26S proteasome is a multicatalytic proteinase complex with a highly ordered structure composed of 2 complexes, a 20S core and a 19S regulator. The 20S core is composed of 4 rings of 28 non-identical subunits; 2 rings are composed of 7 alpha subunits and 2 rings are composed of 7 beta subunits. The 19S regulator is composed of a base, which contains 6 ATPase subunits and 2 non-ATPase subunits, and a lid, which contains up to 10 non-ATPase subunits. Proteasomes are distributed throughout eukaryotic cells at a high concentration and cleave peptides in an ATP/ubiquitin-dependent process in a non-lysosomal pathway. An essential function of a modified proteasome, the immunoproteasome, is the processing of class I MHC peptides. This gene encodes one of the ATPase subunits, a member of the triple-A family of ATPases which have a chaperone-like activity. Pseudogenes have been identified on chromosomes 8 and 12.

Synonyms:

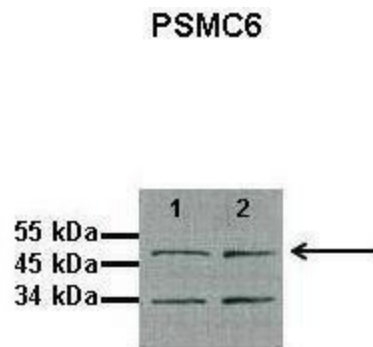
CADP44; HEL-S-73; p42; P44; SUG2

Note:

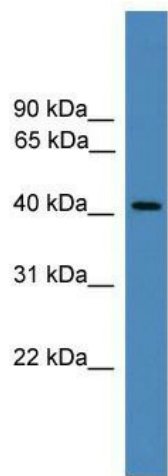
Immunogen Sequence Homology: Dog: 100%; Pig: 100%; Rat: 100%; Horse: 100%; Human: 100%; Mouse: 100%; Bovine: 100%; Rabbit: 100%; Zebrafish: 100%; Guinea pig: 100%; Yeast: 86%

Protein Pathways:

Proteasome

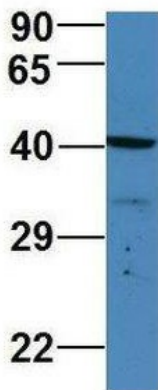
Product images:

Lanes: 1: 10ug proteasome fraction from C57B1/6J mouse brain, 2: 10ug proteasome fraction from BLAB/C mouse brain; Primary Antibody Dilution: 1:500; Secondary Antibody: Anti-rabbit HRP; Secondary Antibody Dilution: 1:5000; Gene Name: PSMC6; Submitted by:



WB Suggested Anti-PSMC6 Antibody Titration:
0.2-1 ug/ml; ELISA Titer: 1:312500; Positive
Control: Jurkat cell lysate

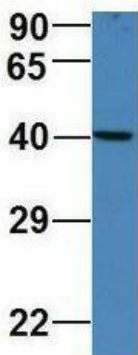
PSMC6



Rabbit Anti-PSMC6
Sample Type: Human MCF7
Antibody Concentration: 1ug/mL

Host: Rabbit; Target Name: PSMC6; Sample
Tissue: Human MCF7; Antibody Dilution: 1.0
ug/ml PSMC6 is supported by BioGPS gene
expression data to be expressed in MCF7

PSMC6



Rabbit Anti-PSMC6
Sample Type: Human 721_B
Antibody Concentration: 1ug/mL

Host: Rabbit; Target Name: PSMC6; Sample
Tissue: Human 721_B; Antibody Dilution: 1.0
ug/ml PSMC6 is supported by BioGPS gene
expression data to be expressed in 721_B