

Product datasheet for **TA342588**

UBQLN2 Rabbit Polyclonal Antibody

Product data:

Product Type:	Primary Antibodies
Applications:	WB
Recommended Dilution:	WB
Reactivity:	Human
Host:	Rabbit
Isotype:	IgG
Clonality:	Polyclonal
Immunogen:	The immunogen for anti-UBQLN2 antibody: synthetic peptide directed towards the N terminal of human UBQLN2. Synthetic peptide located within the following region: LKDQDTLIQHGIHDGLTVHLVIKSQNRPQGQSTQPSNAAGTNTTSASTPR
Formulation:	Liquid. Purified antibody supplied in 1x PBS buffer with 0.09% (w/v) sodium azide and 2% sucrose. <i>Note that this product is shipped as lyophilized powder to China customers.</i>
Conjugation:	Unconjugated
Storage:	Store at -20°C as received.
Stability:	Stable for 12 months from date of receipt.
Predicted Protein Size:	66 kDa
Gene Name:	ubiquilin 2
Database Link:	NP_038472 Entrez Gene 29978 Human Q9UHD9
Background:	This gene encodes an ubiquitin-like protein (ubiquilin) that shares high degree of similarity with related products in yeast, rat and frog. Ubiquilins contain a N-terminal ubiquitin-like domain and a C-terminal ubiquitin-associated domain. They physically associate with both proteasomes and ubiquitin ligases; and thus, are thought to functionally link the ubiquitination machinery to the proteasome to affect in vivo protein degradation. This ubiquilin has also been shown to bind the ATPase domain of the Hsp70-like Stch protein.
Synonyms:	ALS15; CHAP1; DSK2; HRIHFB2157; N4BP4; PLIC2

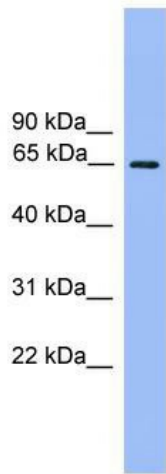


[View online »](#)

Note: Immunogen Sequence Homology: Dog: 100%; Human: 100%; Bovine: 100%; Pig: 93%; Rat: 93%; Guinea pig: 93%; Mouse: 87%; Rabbit: 87%

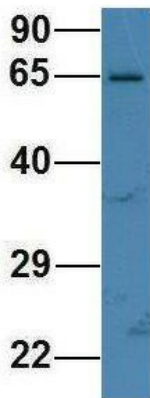
Protein Families: Druggable Genome

Product images:



WB Suggested Anti-UBQLN2 Antibody Titration: 0.2-1 ug/ml; ELISA Titer: 1:1562500; Positive Control: HepG2 cell lysate

UBQLN2



Rabbit Anti-UBQLN2
Sample Type: Human HeLa
Antibody Concentration: 1ug/mL

Host: Rabbit; Target Name: UBQLN2; Sample Tissue: HeLa; Antibody Dilution: 1.0 ug/ml
UBQLN2 is supported by BioGPS gene expression data to be expressed in HeLa