

Product datasheet for **TA342587**

COPS6 Rabbit Polyclonal Antibody

Product data:

| | |
|-------------------------|--|
| Product Type: | Primary Antibodies |
| Applications: | WB |
| Recommended Dilution: | WB |
| Reactivity: | Human, Mouse |
| Host: | Rabbit |
| Isotype: | IgG |
| Clonality: | Polyclonal |
| Immunogen: | The immunogen for anti-COPS6 antibody: synthetic peptide directed towards the middle region of human COPS6. Synthetic peptide located within the following region: DHVARMATATGSGENSTVAEHLIAQHSAIKMLHSRVKLLILEYVKASEAGEV |
| Formulation: | Liquid. Purified antibody supplied in 1x PBS buffer with 0.09% (w/v) sodium azide and 2% sucrose. <i>Note that this product is shipped as lyophilized powder to China customers.</i> |
| Conjugation: | Unconjugated |
| Storage: | Store at -20°C as received. |
| Stability: | Stable for 12 months from date of receipt. |
| Predicted Protein Size: | 36 kDa |
| Gene Name: | COP9 signalosome subunit 6 |
| Database Link: | NP_006824 Entrez Gene 26893 Mouse Entrez Gene 10980 Human Q7L5N1 |
| Background: | The protein encoded by this gene is one of the eight subunits of COP9 signalosome, a highly conserved protein complex that functions as an important regulator in multiple signaling pathways. The structure and function of COP9 signalosome is similar to that of the 19S regulatory particle of 26S proteasome. COP9 signalosome has been shown to interact with SCF-type E3 ubiquitin ligases and act as a positive regulator of E3 ubiquitin ligases. This protein belongs to translation initiation factor 3 (eIF3) superfamily. It is involved in the regulation of cell cycle and likely to be a cellular cofactor for HIV-1 accessory gene product Vpr. |



[View online »](#)

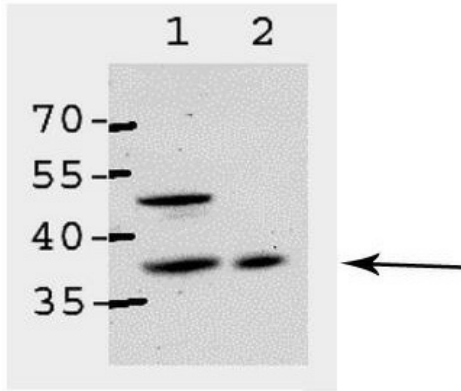
Synonyms: CSN6; MOV34-34KD

Note: Immunogen Sequence Homology: Dog: 100%; Pig: 100%; Rat: 100%; Horse: 100%; Human: 100%; Mouse: 100%; Bovine: 100%; Rabbit: 100%; Guinea pig: 100%; Zebrafish: 93%

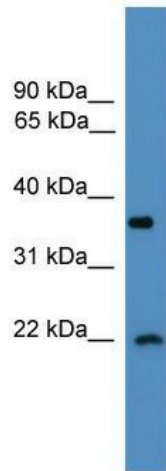
Protein Families: Druggable Genome, Stem cell - Pluripotency

Product images:

COPS6



Sample Type: 1. ABAE cells; 2. CHO-IR cells;
 Primary Dilution: 1:200; Secondary Anitbody: HRP
 conjugated anti-rabbit; Image Submitted By: Dr.
 Elah Pick; University of Haifa at Oranim ; ;



WB Suggested Anti-COPS6 Antibody Titration: 0.2-
 1 ug/ml; ELISA Titer: 1:312500; Positive Control:
 721_B cell lysate COPS6 is strongly supported by
 BioGPS gene expression data to be expressed in
 Human 721_B cells