

Product datasheet for **TA342585**

COPS3 Rabbit Polyclonal Antibody

Product data:

Product Type:	Primary Antibodies
Applications:	WB
Recommended Dilution:	WB
Reactivity:	Human
Host:	Rabbit
Isotype:	IgG
Clonality:	Polyclonal
Immunogen:	The immunogen for anti-COPS3 antibody is: synthetic peptide directed towards the C-terminal region of Human COPS3. Synthetic peptide located within the following region: HNIDQEMLKCIELDERLKAMDQEITVNPQFVQKSMGSQEDDSGNKPSSYS
Formulation:	Liquid. Purified antibody supplied in 1x PBS buffer with 0.09% (w/v) sodium azide and 2% sucrose. <i>Note that this product is shipped as lyophilized powder to China customers.</i>
Purification:	Affinity Purified
Conjugation:	Unconjugated
Storage:	Store at -20°C as received.
Stability:	Stable for 12 months from date of receipt.
Predicted Protein Size:	44 kDa
Gene Name:	COP9 signalosome subunit 3
Database Link:	NP_003644 Entrez Gene 8533 Human Q9UNS2
Background:	The protein encoded by this gene possesses kinase activity that phosphorylates regulators involved in signal transduction. It phosphorylates I kappa-Balpha, p105, and c-Jun. It acts as a docking site for complex-mediated phosphorylation. The gene is located within the Smith-Magenis syndrome region on chromosome 17. Two transcript variants encoding different isoforms have been found for this gene.
Synonyms:	CSN3; SGN3

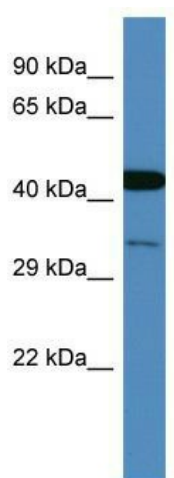


[View online »](#)

Note: Immunogen Sequence Homology: Dog: 100%; Pig: 100%; Rat: 100%; Horse: 100%; Human: 100%; Mouse: 100%; Bovine: 100%; Rabbit: 100%; Guinea pig: 100%

Protein Families: Stem cell - Pluripotency

Product images:



Host: Rabbit; Target Name: COPS3; Sample Tissue: Fetal Brain lysates; Antibody Dilution: 1.0 ug/ml