

Product datasheet for **TA342584**

AIMP2 Rabbit Polyclonal Antibody

Product data:

Product Type:	Primary Antibodies
Applications:	WB
Recommended Dilution:	WB
Reactivity:	Human
Host:	Rabbit
Isotype:	IgG
Clonality:	Polyclonal
Immunogen:	The immunogen for anti-AIMP2 antibody: synthetic peptide directed towards the N terminal of human AIMP2. Synthetic peptide located within the following region: SLQALESRQDDILKRLYELKAAVDGLSKMIQTPDADLDVTNIIQADEPTT
Formulation:	Liquid. Purified antibody supplied in 1x PBS buffer with 0.09% (w/v) sodium azide and 2% sucrose. <i>Note that this product is shipped as lyophilized powder to China customers.</i>
Conjugation:	Unconjugated
Storage:	Store at -20°C as received.
Stability:	Stable for 12 months from date of receipt.
Predicted Protein Size:	35 kDa
Gene Name:	aminoacyl tRNA synthetase complex interacting multifunctional protein 2
Database Link:	NP_006294 Entrez Gene 7965 Human Q13155
Background:	The JTV1 gene is located on chromosome 7p22 flanked by two genes, HRI and PMS2. JTV1 and HRI overlap slightly and are arranged in a tail-to-tail fashion. JTV1 and PMS2 are separated by approximately 200 base pairs and are arranged head-to-head. JTV1 is transcribed in the opposite direction compared to HRI and PMS2. The function of the JTV1 gene product is unknown.
Synonyms:	JTV-1; JTV1; P38; PRO0992

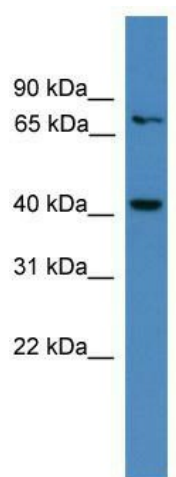


[View online »](#)

Note: Immunogen Sequence Homology: Dog: 100%; Pig: 100%; Rat: 100%; Horse: 100%; Human: 100%; Mouse: 100%; Sheep: 100%; Guinea pig: 100%; Bovine: 93%; Rabbit: 93%

Protein Families: Stem cell - Pluripotency

Product images:



WB Suggested Anti-AIMP2 Antibody Titration: 0.2-1 ug/ml; ELISA Titer: 1:1562500; Positive Control: MCF7 cell lysate. AIMP2 is strongly supported by BioGPS gene expression data to be expressed in Human MCF7 cells