

Product datasheet for **TA342577**

USP6 Rabbit Polyclonal Antibody

Product data:

Product Type:	Primary Antibodies
Applications:	WB
Recommended Dilution:	WB
Reactivity:	Human
Host:	Rabbit
Isotype:	IgG
Clonality:	Polyclonal
Immunogen:	The immunogen for anti-USP6 antibody is: synthetic peptide directed towards the C-terminal region of Human USP6. Synthetic peptide located within the following region: NHSEEDSTDDQREDTHIKPIYNLYAISCHSGILSGGHYITYAKNPNCWKY
Formulation:	Liquid. Purified antibody supplied in 1x PBS buffer with 0.09% (w/v) sodium azide and 2% sucrose.
Purification:	Affinity Purified
Conjugation:	Unconjugated
Storage:	Store at -20°C as received.
Stability:	Stable for 12 months from date of receipt.
Predicted Protein Size:	119 kDa
Gene Name:	ubiquitin specific peptidase 6
Database Link:	NP_004496 Entrez Gene 9098 Human P35125
Background:	USP6 is a deubiquitinase with an ATP-independent isopeptidase activity, cleaving at the C-terminus of the ubiquitin moiety. It catalyzes its own deubiquitination. In vitro, isoform 2, but not isoform 3, shows deubiquitinating activity. USP6 promotes plasma membrane localization of ARF6 and selectively regulates ARF6-dependent endocytic protein trafficking. It is able to initiate tumorigenesis by inducing the production of matrix metalloproteinases following NF-kappa-B activation.
Synonyms:	HRP1; Tre-2; TRE2; TRE17; TRESMCR; USP6-short

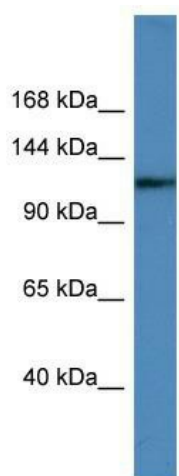


[View online »](#)

Note: Immunogen Sequence Homology: Pig: 100%; Rat: 100%; Human: 100%; Guinea pig: 100%; Dog: 93%; Horse: 93%; Mouse: 93%; Bovine: 93%; Rabbit: 91%

Protein Families: Druggable Genome, Protease

Product images:



Host: Rabbit; Target Name: USP6; Sample Tissue: Jurkat Whole Cell lysates; Antibody Dilution: 1.0 ug/ml