

Product datasheet for **TA342575**

USP38 Rabbit Polyclonal Antibody

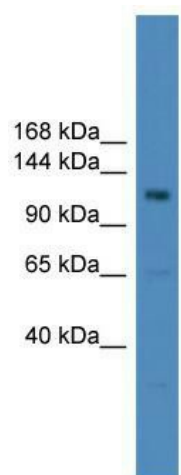
Product data:

Product Type:	Primary Antibodies
Applications:	WB
Recommended Dilution:	WB
Reactivity:	Human
Host:	Rabbit
Isotype:	IgG
Clonality:	Polyclonal
Immunogen:	The immunogen for anti-USP38 antibody: synthetic peptide directed towards the middle region of human USP38. Synthetic peptide located within the following region: LVNKDVPQKPGGETTPSVTDLLNYFLAPEILTGDNQYYCENCASLQNAEK
Formulation:	Liquid. Purified antibody supplied in 1x PBS buffer with 0.09% (w/v) sodium azide and 2% sucrose. <i>Note that this product is shipped as lyophilized powder to China customers.</i>
Conjugation:	Unconjugated
Storage:	Store at -20°C as received.
Stability:	Stable for 12 months from date of receipt.
Predicted Protein Size:	116 kDa
Gene Name:	ubiquitin specific peptidase 38
Database Link:	NP_115946 Entrez Gene 84640 Human Q8NB14
Background:	The function of USP38 remains unknown.
Synonyms:	HP43.8KD
Note:	Immunogen Sequence Homology: Pig: 100%; Human: 100%; Bovine: 100%; Rabbit: 100%; Horse: 93%; Guinea pig: 93%; Dog: 86%; Rat: 85%; Mouse: 83%
Protein Families:	Druggable Genome, Protease



[View online »](#)

Product images:



WB Suggested Anti-USP38 Antibody Titration: 0.2-1 ug/ml; ELISA Titer: 1:1562500; Positive Control: HepG2 cell lysate