

Product datasheet for **TA342574**

USP35 Rabbit Polyclonal Antibody

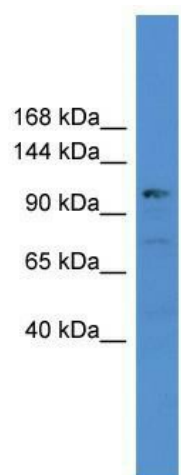
Product data:

Product Type:	Primary Antibodies
Applications:	WB
Recommended Dilution:	WB
Reactivity:	Human
Host:	Rabbit
Isotype:	IgG
Clonality:	Polyclonal
Immunogen:	The immunogen for anti-USP35 antibody: synthetic peptide directed towards the C terminal of human USP35. Synthetic peptide located within the following region: MEAIKDNILYLQEQEKEARSRAAYISALPTSPHWGRGFDEDKDEDEGSP
Formulation:	Liquid. Purified antibody supplied in 1x PBS buffer with 0.09% (w/v) sodium azide and 2% sucrose. <i>Note that this product is shipped as lyophilized powder to China customers.</i>
Conjugation:	Unconjugated
Storage:	Store at -20°C as received.
Stability:	Stable for 12 months from date of receipt.
Predicted Protein Size:	113 kDa
Gene Name:	ubiquitin specific peptidase 35
Database Link:	NP_065849 Entrez Gene 57558 Human Q9P2H5
Background:	The function of USP35 remains unknown.
Synonyms:	KIAA1372; USP34
Note:	Immunogen Sequence Homology: Dog: 100%; Rat: 100%; Goat: 100%; Human: 100%; Mouse: 100%; Rabbit: 100%; Bovine: 83%; Horse: 82%; Yeast: 82%
Protein Families:	Druggable Genome, Protease



[View online »](#)

Product images:



WB Suggested Anti-USP35 Antibody Titration: 0.2-1 ug/ml; ELISA Titer: 1:312500; Positive Control: Human Muscle