

## Product datasheet for **TA342571**

### USP20 Rabbit Polyclonal Antibody

#### Product data:

Product Type:	Primary Antibodies
Applications:	WB
Recommended Dilution:	WB
Reactivity:	Human
Host:	Rabbit
Isotype:	IgG
Clonality:	Polyclonal
Immunogen:	The immunogen for anti-USP20 antibody: synthetic peptide directed towards the middle region of human USP20. Synthetic peptide located within the following region: PAEAQPSPRSSSPCRTPEPDNDAHLRSSSRPCSPVHHHEGHAKLSSSP
Formulation:	Liquid. Purified antibody supplied in 1x PBS buffer with 0.09% (w/v) sodium azide and 2% sucrose. <i>Note that this product is shipped as lyophilized powder to China customers.</i>
Conjugation:	Unconjugated
Storage:	Store at -20°C as received.
Stability:	Stable for 12 months from date of receipt.
Predicted Protein Size:	102 kDa
Gene Name:	ubiquitin specific peptidase 20
Database Link:	<a href="#">NP_006667</a> <a href="#">Entrez Gene 10868 Human</a> <a href="#">Q9Y2K6</a>



[View online »](#)

**Background:**

USP20 is a deubiquitinating enzyme involved in beta-2 adrenergic receptor (ADRB2) recycling. USP20 acts as a regulator of G-protein coupled receptor (GPCR) signaling by mediating the deubiquitination beta-2 adrenergic receptor (ADRB2). USP20 plays a central role in ADRB2 recycling and resensitization after prolonged agonist stimulation by constitutively binding ADRB2, mediating deubiquitination of ADRB2 and inhibiting lysosomal trafficking of ADRB2. Upon dissociation, it is probably transferred to the translocated beta-arrestins, possibly leading to beta-arrestins deubiquitination and disengagement from ADRB2. This suggests the existence of a dynamic exchange between the ADRB2 and beta-arrestins. Deubiquitinates DIO2, thereby regulating thyroid hormone regulation. USP20 deubiquitinates HIF1A, leading to stabilize HIF1A and enhance HIF1A-mediated activity. USP20 mediates deubiquitination of both 'Lys-48'- and 'Lys-63'-linked polyubiquitin chains.

**Synonyms:**

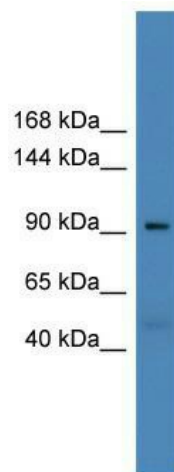
hVDU2; LSFR3A; VDU2

**Note:**

Immunogen Sequence Homology: Pig: 100%; Human: 100%; Rabbit: 100%; Guinea pig: 100%; Dog: 92%; Rat: 92%; Horse: 92%; Bovine: 92%; Mouse: 85%

**Protein Families:**

Druggable Genome, Protease

**Product images:**

WB Suggested Anti-USP20 Antibody Titration: 0.2-1 ug/ml; ELISA Titer: 1:312500; Positive Control: Human heart