

## Product datasheet for **TA342569**

### USP2 Rabbit Polyclonal Antibody

#### Product data:

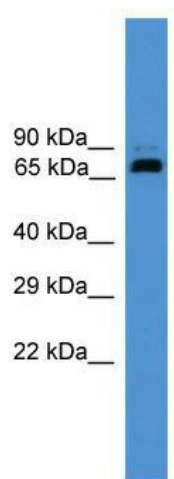
Product Type:	Primary Antibodies
Applications:	WB
Recommended Dilution:	WB
Reactivity:	Human
Host:	Rabbit
Isotype:	IgG
Clonality:	Polyclonal
Immunogen:	The immunogen for anti-USP2 antibody: synthetic peptide directed towards the middle region of human USP2. Synthetic peptide located within the following region: NEVNRVTLRPKSNPENLDHLPDDEKGRQMWRKYLEREDSRIGDLFVGQLK
Formulation:	Liquid. Purified antibody supplied in 1x PBS buffer with 0.09% (w/v) sodium azide and 2% sucrose. <i>Note that this product is shipped as lyophilized powder to China customers.</i>
Conjugation:	Unconjugated
Storage:	Store at -20°C as received.
Stability:	Stable for 12 months from date of receipt.
Predicted Protein Size:	68 kDa
Gene Name:	ubiquitin specific peptidase 2
Database Link:	<a href="#">NP_004196</a> <a href="#">Entrez Gene 9099 Human O75604</a>
Background:	Ubiquitin (MIM 191339), a highly conserved protein involved in the regulation of intracellular protein breakdown, cell cycle regulation, and stress response, is released from degraded proteins by disassembly of the polyubiquitin chains. The disassembly process is mediated by ubiquitin-specific proteases (USPs). Also see USP1 (MIM 603478).
Synonyms:	UBP41; USP9
Note:	Immunogen Sequence Homology: Dog: 100%; Horse: 100%; Human: 100%; Rabbit: 100%; Rat: 93%; Bovine: 93%; Pig: 86%; Guinea pig: 86%; Mouse: 79%



[View online »](#)

Protein Families: Protease

### Product images:



WB Suggested Anti-USP2 Antibody Titration: 0.2-1 ug/ml; ELISA Titer: 1:312500; Positive Control: Human brain