

## Product datasheet for **TA342568**

### USP15 Rabbit Polyclonal Antibody

#### Product data:

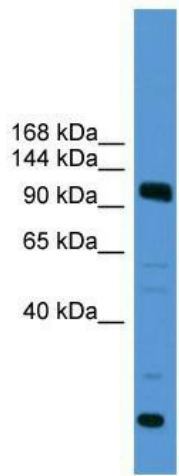
Product Type:	Primary Antibodies
Applications:	IF, WB
Recommended Dilution:	WB, IF
Reactivity:	Human
Host:	Rabbit
Isotype:	IgG
Clonality:	Polyclonal
Immunogen:	The immunogen for anti-USP15 antibody: synthetic peptide directed towards the C terminal of human USP15. Synthetic peptide located within the following region: GNTDINYIKDDTRHIRFDDRQLRLDERSFLALDWDPLKCRYFDENAAED
Formulation:	Liquid. Purified antibody supplied in 1x PBS buffer with 0.09% (w/v) sodium azide and 2% sucrose. <i>Note that this product is shipped as lyophilized powder to China customers.</i>
Conjugation:	Unconjugated
Storage:	Store at -20°C as received.
Stability:	Stable for 12 months from date of receipt.
Predicted Protein Size:	109 kDa
Gene Name:	ubiquitin specific peptidase 15
Database Link:	<a href="#">NP_006304</a> <a href="#">Entrez Gene 9958 Human</a> <a href="#">Q9Y4E8</a>
Background:	Ubiquitin (MIM 191339), a highly conserved protein involved in the regulation of intracellular protein breakdown, cell cycle regulation, and stress response, is released from degraded proteins by disassembly of the polyubiquitin chains. The disassembly process is mediated by ubiquitin-specific proteases (USPs). Also see USP1 (MIM 603478).
Synonyms:	UNPH-2; UNPH4
Note:	Immunogen Sequence Homology: Dog: 100%; Pig: 100%; Rat: 100%; Horse: 100%; Human: 100%; Mouse: 100%; Bovine: 100%; Rabbit: 100%; Guinea pig: 100%



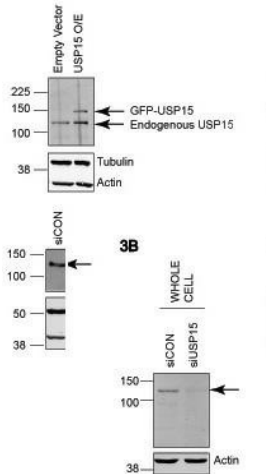
[View online »](#)

Protein Families: Druggable Genome, Protease

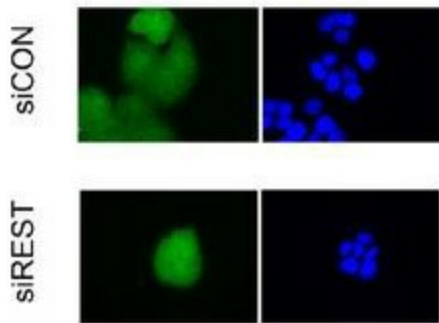
**Product images:**



WB Suggested Anti-USP15 Antibody Titration: 0.2-1 ug/ml; ELISA Titer: 1:312500; Positive Control: Jurkat cell lysate



USP15 antibody validated by WB using A549 and HEK293T cells at 1: 500.



Immunofluorescence Sample Type: A549&HEK293T cells Primary Dilution: 1:500