

Product datasheet for **TA342565**

USP1 Rabbit Polyclonal Antibody

Product data:

Product Type:	Primary Antibodies
Applications:	WB
Recommended Dilution:	WB
Reactivity:	Human
Host:	Rabbit
Isotype:	IgG
Clonality:	Polyclonal
Immunogen:	The immunogen for anti-USP1 antibody: synthetic peptide directed towards the C terminal of human USP1. Synthetic peptide located within the following region: SETSDTTGTHESDRNKESDQTGINISGFENKISYVVQSLKEYEGKWLFF
Formulation:	Liquid. Purified antibody supplied in 1x PBS buffer with 0.09% (w/v) sodium azide and 2% sucrose. <i>Note that this product is shipped as lyophilized powder to China customers.</i>
Conjugation:	Unconjugated
Storage:	Store at -20°C as received.
Stability:	Stable for 12 months from date of receipt.
Predicted Protein Size:	88 kDa
Gene Name:	ubiquitin specific peptidase 1
Database Link:	NP_003359 Entrez Gene 7398 Human O94782
Background:	This gene encodes a member of the ubiquitin-specific processing (UBP) family of proteases that is a deubiquitinating enzyme (DUB) with His and Cys domains. This protein is located in the cytoplasm and cleaves the ubiquitin moiety from ubiquitin-fused precursors and ubiquitylated proteins. The protein specifically deubiquitinates a protein in the Fanconi anemia (FA) DNA repair pathway. Alternate transcriptional splice variants have been characterized.
Synonyms:	UBP

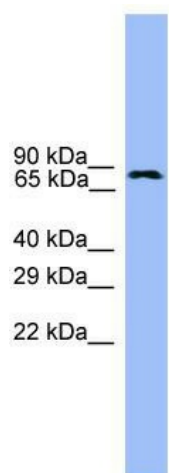


[View online »](#)

Note: Immunogen Sequence Homology: Horse: 100%; Human: 100%; Mouse: 100%; Pig: 93%; Rabbit: 93%; Rat: 92%; Bovine: 92%; Dog: 86%; Guinea pig: 86%

Protein Families: Protease

Product images:



WB Suggested Anti-USP1 Antibody Titration: 0.2-1 ug/ml; ELISA Titer: 1:312500; Positive Control: Human brain