

## Product datasheet for **TA342563**

### UCHL3 Rabbit Polyclonal Antibody

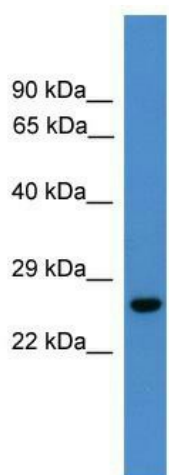
#### Product data:

Product Type:	Primary Antibodies
Applications:	WB
Recommended Dilution:	WB
Reactivity:	Human
Host:	Rabbit
Isotype:	IgG
Clonality:	Polyclonal
Immunogen:	The immunogen for anti-UCHL3 antibody: synthetic peptide directed towards the C terminal of human UCHL3. Synthetic peptide located within the following region: YELDGRKPFIPINHGETSDETLLEDAIEVCKKFMERDPDELRFNIAIALSAA
Formulation:	Liquid. Purified antibody supplied in 1x PBS buffer with 0.09% (w/v) sodium azide and 2% sucrose. <i>Note that this product is shipped as lyophilized powder to China customers.</i>
Conjugation:	Unconjugated
Storage:	Store at -20°C as received.
Stability:	Stable for 12 months from date of receipt.
Predicted Protein Size:	25 kDa
Gene Name:	ubiquitin C-terminal hydrolase L3
Database Link:	<a href="#">NP_005993</a> <a href="#">Entrez Gene 7347 Human P15374</a>
Background:	UCHL3 is an ubiquitin-protein hydrolase involved both in the processing of ubiquitin precursors and of ubiquitinated proteins. This enzyme is a thiol protease that recognizes and hydrolyzes a peptide bond at the C-terminal glycine of either ubiquitin or NEDD8.
Synonyms:	UCH-L3
Note:	Immunogen Sequence Homology: Dog: 100%; Pig: 100%; Rat: 100%; Horse: 100%; Human: 100%; Mouse: 100%; Bovine: 100%; Rabbit: 100%; Guinea pig: 100%; Zebrafish: 85%
Protein Families:	Druggable Genome, Protease



[View online »](#)

## Product images:



WB Suggested Anti-UCHL3 Antibody Titration:  
0.2-1 ug/ml; ELISA Titer: 1:312500; Positive  
Control: Human Liver