

Product datasheet for **TA342561**

UCH37 (UCHL5) Rabbit Polyclonal Antibody

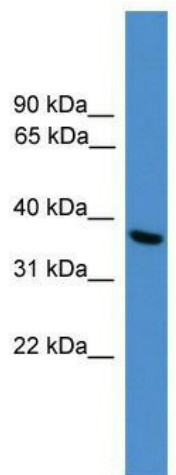
Product data:

Product Type:	Primary Antibodies
Applications:	WB
Recommended Dilution:	WB
Reactivity:	Human
Host:	Rabbit
Isotype:	IgG
Clonality:	Polyclonal
Immunogen:	The immunogen for anti-UCHL5 antibody: synthetic peptide directed towards the C terminal of human UCHL5. Synthetic peptide located within the following region: KRYKIENIRRKHNYLPPFIMELLKTLAEHQQLIPLVEKAKEKQNAKKAQETK
Formulation:	Liquid. Purified antibody supplied in 1x PBS buffer with 0.09% (w/v) sodium azide and 2% sucrose. <i>Note that this product is shipped as lyophilized powder to China customers.</i>
Conjugation:	Unconjugated
Storage:	Store at -20°C as received.
Stability:	Stable for 12 months from date of receipt.
Predicted Protein Size:	37 kDa
Gene Name:	ubiquitin C-terminal hydrolase L5
Database Link:	NP_057068 Entrez Gene 51377 Human Q9Y5K5
Background:	UCHL5 is the deubiquitinating enzyme associated with the proteasome.
Synonyms:	CGI-70; INO80R; UCH-L5; UCH37
Note:	Immunogen Sequence Homology: Dog: 100%; Pig: 100%; Horse: 100%; Human: 100%; Mouse: 100%; Bovine: 100%; Rabbit: 100%; Guinea pig: 100%; Rat: 93%; Zebrafish: 79%
Protein Families:	Druggable Genome, Protease



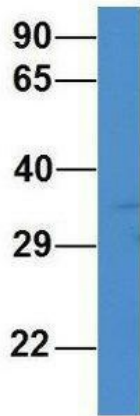
[View online »](#)

Product images:



WB Suggested Anti-UCLH5 Antibody Titration:
0.2-1 ug/ml; ELISA Titer: 1:312500; Positive
Control: HepG2 cell lysate

UCLH5



Rabbit Anti-UCLH5
Sample Type: Human Fetal
Muscle
Antibody Concentration: 1ug/mL

Host: Rabbit; Target Name: UCLH5; Sample
Tissue: Human Fetal Muscle; Antibody Dilution:
1.0 ug/ml