

Product datasheet for **TA342560**

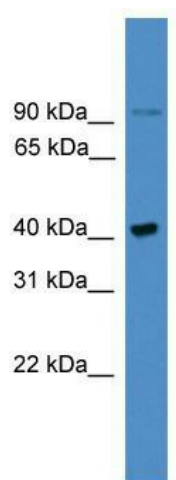
UBXN6 Rabbit Polyclonal Antibody

Product data:

Product Type:	Primary Antibodies
Applications:	WB
Recommended Dilution:	WB
Reactivity:	Human
Host:	Rabbit
Isotype:	IgG
Clonality:	Polyclonal
Immunogen:	The immunogen for anti-UBXN6 antibody: synthetic peptide directed towards the C terminal of human UBXN6. Synthetic peptide located within the following region: YARERLGAVYGFVREALQSDWLFPFELLASGGQKLSEDENLALNECGLVPS
Formulation:	Liquid. Purified antibody supplied in 1x PBS buffer with 0.09% (w/v) sodium azide and 2% sucrose.
Conjugation:	Unconjugated
Storage:	Store at -20°C as received.
Stability:	Stable for 12 months from date of receipt.
Predicted Protein Size:	44 kDa
Gene Name:	UBX domain protein 6
Database Link:	NP_001164562 Entrez Gene 80700 Human Q9BZV1
Background:	The function of UBXN6 remains unknown.
Synonyms:	UBXD1; UBXDC2
Note:	Immunogen Sequence Homology: Pig: 100%; Horse: 100%; Human: 100%; Bovine: 100%; Rabbit: 93%; Rat: 86%; Mouse: 79%; Guinea pig: 79%; Dog



[View online »](#)

Product images:


WB Suggested Anti-UBXN6 Antibody Titration:
0.2-1 ug/ml; ELISA Titer: 1:312500; Positive
Control: Human Muscle