

Product datasheet for **TA342557**

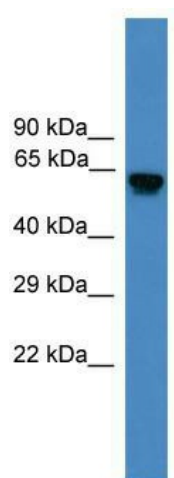
USP17L2 Rabbit Polyclonal Antibody

Product data:

Product Type:	Primary Antibodies
Applications:	WB
Recommended Dilution:	WB
Reactivity:	Human
Host:	Rabbit
Isotype:	IgG
Clonality:	Polyclonal
Immunogen:	The immunogen for anti-USP17L2 antibody: synthetic peptide directed towards the middle region of human USP17L2. Synthetic peptide located within the following region: FYIQKSEWERHSESVSRGREPRALGAEDTDRRATQGELKRDHPCLQAPEL
Formulation:	Liquid. Purified antibody supplied in 1x PBS buffer with 0.09% (w/v) sodium azide and 2% sucrose. <i>Note that this product is shipped as lyophilized powder to China customers.</i>
Conjugation:	Unconjugated
Storage:	Store at -20°C as received.
Stability:	Stable for 12 months from date of receipt.
Predicted Protein Size:	59 kDa
Gene Name:	ubiquitin specific peptidase 17-like family member 2
Database Link:	NP_958804 Entrez Gene 377630 Human Q6R6M4
Background:	DUB3 is a member of the ubiquitin processing protease (UBP) subfamily of deubiquitinating enzymes. See USP1 (MIM 603478) for background information.
Synonyms:	DUB-3; DUB3; USP17
Note:	Immunogen Sequence Homology: Human: 100%



[View online »](#)

Product images:

WB Suggested Anti-USP17L2 Antibody Titration:
0.2-1 ug/ml; ELISA Titer: 1:312500; Positive
Control: Human heart