

Product datasheet for **TA342554**

CDC27 Rabbit Polyclonal Antibody

Product data:

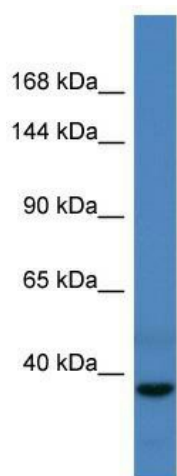
Product Type:	Primary Antibodies
Applications:	WB
Recommended Dilution:	WB
Reactivity:	Human
Host:	Rabbit
Isotype:	IgG
Clonality:	Polyclonal
Immunogen:	The immunogen for anti-CDC27 antibody is: synthetic peptide directed towards the C-terminal region of Human CDC27. Synthetic peptide located within the following region: SYIDSAVISPDTVPLGTGTSILSKQVQNKPKTGRSLLGGPAALSPLTPSF
Formulation:	Liquid. Purified antibody supplied in 1x PBS buffer with 0.09% (w/v) sodium azide and 2% sucrose. <i>Note that this product is shipped as lyophilized powder to China customers.</i>
Purification:	Affinity Purified
Conjugation:	Unconjugated
Storage:	Store at -20°C as received.
Stability:	Stable for 12 months from date of receipt.
Predicted Protein Size:	37 kDa
Gene Name:	cell division cycle 27
Database Link:	NP_001247 Entrez Gene 996 Human P30260
Background:	The function of this protein remains unknown.
Synonyms:	ANAPC3; APC3; CDC27Hs; D0S1430E; D17S978E; H-NUC; HNUC; NUC2
Note:	Immunogen Sequence Homology: Dog: 100%; Pig: 100%; Rat: 100%; Horse: 100%; Human: 100%; Mouse: 100%; Bovine: 100%; Rabbit: 100%; Guinea pig: 100%; Zebrafish: 92%
Protein Families:	Druggable Genome



[View online »](#)

Protein Pathways: Cell cycle, Oocyte meiosis, Progesterone-mediated oocyte maturation, Ubiquitin mediated proteolysis

Product images:



Host: Rabbit; Target Name: CDC27; Sample Tissue: Fetal Liver lysates; Antibody Dilution: 1.0 ug/ml