

## Product datasheet for **TA342553**

### ASPP1 (PPP1R13B) Rabbit Polyclonal Antibody

#### Product data:

Product Type:	Primary Antibodies
Applications:	WB
Recommended Dilution:	WB
Reactivity:	Human
Host:	Rabbit
Isotype:	IgG
Clonality:	Polyclonal
Immunogen:	The immunogen for anti-PPP1R13B antibody: synthetic peptide directed towards the middle region of human PPP1R13B. Synthetic peptide located within the following region: EFDLVQRIIYEVEDPSKPNDEGITPLHNAVCAHHHIVKFLLDGFGVNVNA
Formulation:	Liquid. Purified antibody supplied in 1x PBS buffer with 0.09% (w/v) sodium azide and 2% sucrose. <i>Note that this product is shipped as lyophilized powder to China customers.</i>
Conjugation:	Unconjugated
Storage:	Store at -20°C as received.
Stability:	Stable for 12 months from date of receipt.
Predicted Protein Size:	119 kDa
Gene Name:	protein phosphatase 1 regulatory subunit 13B
Database Link:	<a href="#">NP_056131</a> <a href="#">Entrez Gene 23368 Human</a> <a href="#">Q96KQ4</a>
Background:	This gene encodes a member of the ASPP (apoptosis-stimulating protein of p53) family of p53 interacting proteins. The protein contains four ankyrin repeats and an SH3 domain involved in protein-protein interactions. ASPP proteins are required for the induction of apoptosis by p53-family proteins. They promote DNA binding and transactivation of p53-family proteins on the promoters of proapoptotic genes. Expression of this gene is regulated by the E2F transcription factor. [provided by RefSeq, Jul 2008]
Synonyms:	ASPP1; p53BP2-like; p85

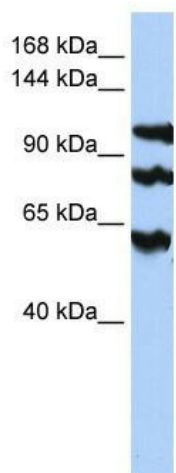


[View online »](#)

**Note:** Immunogen Sequence Homology: Dog: 100%; Pig: 100%; Rat: 100%; Horse: 100%; Human: 100%; Mouse: 100%; Bovine: 100%; Guinea pig: 100%; Rabbit: 93%; Zebrafish: 93%

**Protein Families:** Druggable Genome

**Product images:**



WB Suggested Anti-PPP1R13B Antibody Titration: 0.2-1 ug/ml; ELISA Titer: 1: 312500; Positive Control: HepG2 cell lysate; PPP1R13B is supported by BioGPS gene expression data to be expressed in HepG2