

Product datasheet for **TA342552**

NDRG2 Rabbit Polyclonal Antibody

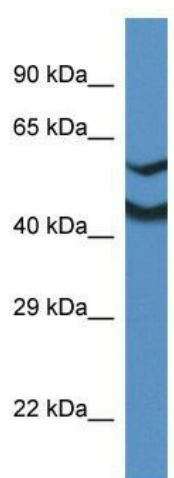
Product data:

Product Type:	Primary Antibodies
Applications:	WB
Recommended Dilution:	WB
Reactivity:	Mouse
Host:	Rabbit
Isotype:	IgG
Clonality:	Polyclonal
Immunogen:	The immunogen for anti-NdrG2 antibody: synthetic peptide corresponding to a region of Mouse. Synthetic peptide located within the following region: TEEKPLLPGQTPETAKEAELAARILLDQGQTHSVETPYGSVTFTVYGTPK
Formulation:	Liquid. Purified antibody supplied in 1x PBS buffer with 0.09% (w/v) sodium azide and 2% sucrose. <i>Note that this product is shipped as lyophilized powder to China customers.</i>
Conjugation:	Unconjugated
Storage:	Store at -20°C as received.
Stability:	Stable for 12 months from date of receipt.
Predicted Protein Size:	41 kDa
Gene Name:	NDRG family member 2
Database Link:	NP_057334 Entrez Gene 29811 Mouse Q9UN36
Background:	Contributes to the regulation of the Wnt signaling pathway. Down-regulates CTNNB1-mediated transcriptional activation of target genes, such as CCND1, and may thereby act as tumor suppressor. May be involved in dendritic cell and neuron differentiation.
Synonyms:	SYLD
Note:	Immunogen Sequence Homology: Dog: 100%; Pig: 100%; Rat: 100%; Horse: 100%; Human: 100%; Mouse: 100%; Bovine: 100%; Zebrafish: 100%; Guinea pig: 100%; Rabbit: 93%



[View online »](#)

Product images:



WB Suggested Anti-NdrG2 Antibody; Titration: 1.0 ug/ml; Positive Control: Mouse Kidney