

Product datasheet for **TA342547**

Collagen XV (COL15A1) Rabbit Polyclonal Antibody

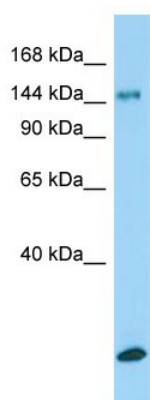
Product data:

Product Type:	Primary Antibodies
Recommended Dilution:	WB
Reactivity:	Rat
Host:	Rabbit
Isotype:	IgG
Clonality:	Polyclonal
Immunogen:	The immunogen for anti-Col15a1 antibody is: synthetic peptide directed towards the middle region of Rat Col15a1. Synthetic peptide located within the following region: ASGQPGMKGEKGARGPNGSVGEKGDPSRGLPGPPGKNGEVGIPGAMGPP
Formulation:	Liquid. Purified antibody supplied in 1x PBS buffer with 0.09% (w/v) sodium azide and 2% sucrose. <i>Note that this product is shipped as lyophilized powder to China customers.</i>
Conjugation:	Unconjugated
Storage:	Store at -20°C as received.
Stability:	Stable for 12 months from date of receipt.
Predicted Protein Size:	138 kDa
Gene Name:	collagen type XV alpha 1 chain
Database Link:	NP_001846 Entrez Gene 298069 Rat P39059
Background:	The function of this protein remains unknown.
Synonyms:	FLJ38566
Note:	Immunogen Sequence Homology: Dog: 100%; Pig: 100%; Rat: 100%; Human: 100%; Mouse: 100%; Bovine: 100%; Rabbit: 100%; Guinea pig: 100%; Horse: 93%; Zebrafish: 91%



[View online »](#)

Product images:



Host: Rabbit
Target Name: Col15a1
Sample Type: Rat Testis lysates
Antibody Dilution: 1.0ug/ml