

## Product datasheet for **TA342546**

### PLAC9 Rabbit Polyclonal Antibody

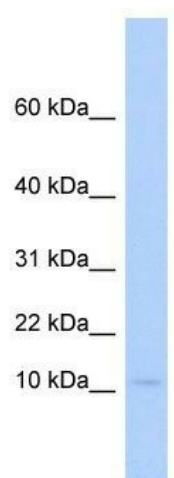
#### Product data:

Product Type:	Primary Antibodies
Applications:	WB
Recommended Dilution:	WB
Reactivity:	Human
Host:	Rabbit
Isotype:	IgG
Clonality:	Polyclonal
Immunogen:	The immunogen for anti-PLAC9 antibody: synthetic peptide directed towards the middle region of human PLAC9. Synthetic peptide located within the following region: RRLDVMEEMVEKTVDHLGTEVKGLLGLLEELAWNLPFGPFSPAPDLLGDG
Formulation:	Liquid. Purified antibody supplied in 1x PBS buffer with 0.09% (w/v) sodium azide and 2% sucrose. <i>Note that this product is shipped as lyophilized powder to China customers.</i>
Conjugation:	Unconjugated
Storage:	Store at -20°C as received.
Stability:	Stable for 12 months from date of receipt.
Predicted Protein Size:	10 kDa
Gene Name:	placenta specific 9
Database Link:	<a href="#">NP_001012991</a> <a href="#">Entrez Gene 219348 Human</a> <a href="#">Q5JTB6</a>
Background:	The exact function of PLAC9 remains unknown.
Synonyms:	MGC104710
Note:	Immunogen Sequence Homology: Human: 100%; Pig: 92%; Rat: 92%; Mouse: 92%; Bovine: 92%



[View online »](#)

## Product images:



WB Suggested Anti-PLAC9 Antibody Titration: 0.2-1 ug/ml; ELISA Titer: 1: 1562500; Positive Control: Human heart