

Product datasheet for TA342545

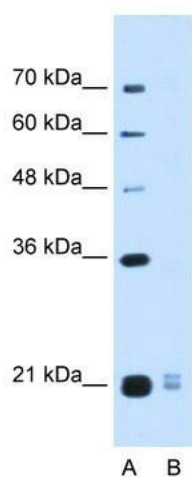
PLAC1L (OOSP2) Rabbit Polyclonal Antibody

Product data:

Product Type:	Primary Antibodies
Applications:	WB
Recommended Dilution:	WB
Reactivity:	Human
Host:	Rabbit
Isotype:	IgG
Clonality:	Polyclonal
Immunogen:	The immunogen for anti-PLAC1L antibody: synthetic peptide directed towards the middle region of human PLAC1L. Synthetic peptide located within the following region: YLVKDCGIRTRVSEETLLFQTELYFTPRNIDHDPQEIHLCESTRKSVW
Formulation:	Liquid. Purified antibody supplied in 1x PBS buffer with 0.09% (w/v) sodium azide and 2% sucrose.
Conjugation:	Unconjugated
Storage:	Store at -20°C as received.
Stability:	Stable for 12 months from date of receipt.
Predicted Protein Size:	18 kDa
Gene Name:	oocyte secreted protein 2
Database Link:	NP_776162 Entrez Gene 219990 Human Q86WS3
Background:	The function remains unknown.
Synonyms:	PLAC1L; TMEM122
Note:	Immunogen Sequence Homology: Human: 100%; Horse: 83%; Rat: 80%
Protein Families:	Secreted Protein


[View online »](#)

Product images:



WB Suggested Anti-PLAC1L Antibody Titration:
0.2-1 ug/ml; Positive Control: HepG2 cell lysate