

## Product datasheet for **TA342543**

### GPR27 Rabbit Polyclonal Antibody

#### Product data:

Product Type:	Primary Antibodies
Applications:	WB
Recommended Dilution:	WB
Reactivity:	Human
Host:	Rabbit
Isotype:	IgG
Clonality:	Polyclonal
Immunogen:	The immunogen for anti-GPR27 antibody: synthetic peptide directed towards the middle region of human GPR27. Synthetic peptide located within the following region: LVCAAWALALAAAFPPVLDGGGDDDEDAPCALEQRPDGAPGALGFLLLAV
Formulation:	Liquid. Purified antibody supplied in 1x PBS buffer with 0.09% (w/v) sodium azide and 2% sucrose. <i>Note that this product is shipped as lyophilized powder to China customers.</i>
Conjugation:	Unconjugated
Storage:	Store at -20°C as received.
Stability:	Stable for 12 months from date of receipt.
Predicted Protein Size:	40 kDa
Gene Name:	G protein-coupled receptor 27
Database Link:	<a href="#">NP_061844</a> <a href="#">Entrez Gene 2850 Human</a> <a href="#">Q9NS67</a>
Background:	GPR27 is a member of the G protein-coupled receptors (GPCRs), a large family of receptors that have a similar structure characterized by 7 transmembrane domains. Activation of GPCRs by extracellular stimuli such as neurotransmitters, hormones, or light induces an intracellular signaling cascade mediated by heterotrimeric GTP-binding proteins, or G proteins. [supplied by OMIM, May 2010]. ##Evidence-Data-START## Transcript exon combination :: AB040799.1 [ECO:0000332] ##Evidence-Data-END##
Synonyms:	SREB1

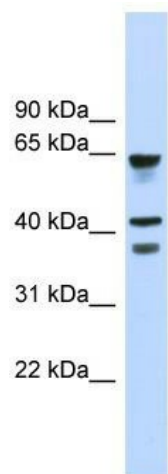


[View online »](#)

**Note:** Immunogen Sequence Homology: Rat: 100%; Human: 100%; Mouse: 100%

**Protein Families:** Druggable Genome, GPCR, Transmembrane

**Product images:**



WB Suggested Anti-GPR27 Antibody Titration: 0.2-1 ug/ml; ELISA Titer: 1: 12500; Positive Control: Human Muscle