

## Product datasheet for TA342536

### NDE1 Rabbit Polyclonal Antibody

#### Product data:

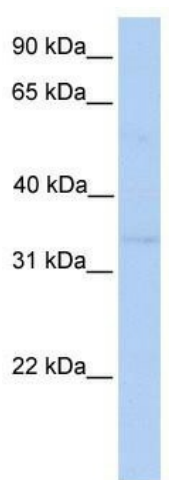
Product Type:	Primary Antibodies
Applications:	WB
Recommended Dilution:	WB
Reactivity:	Human
Host:	Rabbit
Isotype:	IgG
Clonality:	Polyclonal
Immunogen:	The immunogen for anti-NDE1 antibody: synthetic peptide directed towards the middle region of human NDE1. Synthetic peptide located within the following region: AHRGPSSSLNTPGSFRRGLDDSTGGTPLTPAARISALNIVGDLLRKVGAL
Formulation:	Liquid. Purified antibody supplied in 1x PBS buffer with 0.09% (w/v) sodium azide and 2% sucrose.
Conjugation:	Unconjugated
Storage:	Store at -20°C as received.
Stability:	Stable for 12 months from date of receipt.
Predicted Protein Size:	38 kDa
Gene Name:	nudE neurodevelopment protein 1
Database Link:	<a href="#">NP_060138</a> <a href="#">Entrez Gene 54820 Human</a> <a href="#">Q9NXR1</a>
Background:	This gene encodes a member of the nuclear distribution E (NudE) family of proteins. The encoded protein is localized at the centrosome and interacts with other centrosome components as part of a multiprotein complex that regulates dynein function. This protein plays an essential role in microtubule organization, mitosis and neuronal migration. Mutations in this gene cause lissencephaly 4, a disorder characterized by lissencephaly, severe brain atrophy, microcephaly, and severe mental retardation. Alternative splicing results in multiple transcript variants. [provided by RefSeq, Mar 2012]
Synonyms:	HOM-TES-87; LIS4; MHAC; NDE; NUDE; NUDE1



[View online »](#)

**Note:** Immunogen Sequence Homology: Dog: 100%; Pig: 100%; Rat: 100%; Horse: 100%; Human: 100%; Mouse: 100%; Bovine: 100%; Rabbit: 100%; Guinea pig: 100%; Zebrafish: 92%

**Product images:**



WB Suggested Anti-NDE1 Antibody Titration: 0.2-1 ug/ml; Positive Control: HepG2 cell lysate; NDE1 is supported by BioGPS gene expression data to be expressed in HepG2