

Product datasheet for **TA342534**

Nectin 2 (NECTIN2) Rabbit Polyclonal Antibody

Product data:

Product Type:	Primary Antibodies
Applications:	WB
Recommended Dilution:	WB
Reactivity:	Human
Host:	Rabbit
Isotype:	IgG
Clonality:	Polyclonal
Immunogen:	The immunogen for anti-PVRL2 antibody: synthetic peptide directed towards the middle region of human PVRL2. Synthetic peptide located within the following region: MEPDGKDEEEEEEEKAEKGLMLPPPPALEDDMESQLDGSLISRRAYVY
Formulation:	Liquid. Purified antibody supplied in 1x PBS buffer with 0.09% (w/v) sodium azide and 2% sucrose. <i>Note that this product is shipped as lyophilized powder to China customers.</i>
Conjugation:	Unconjugated
Storage:	Store at -20°C as received.
Stability:	Stable for 12 months from date of receipt.
Predicted Protein Size:	48 kDa
Gene Name:	nectin cell adhesion molecule 2
Database Link:	NP_002847 Entrez Gene 5819 Human Q92692
Background:	This gene encodes a single-pass type I membrane glycoprotein with two Ig-like C2-type domains and an Ig-like V-type domain. This protein is one of the plasma membrane components of adherens junctions. It also serves as an entry for certain mutant strains of herpes simplex virus and pseudorabies virus, and it is involved in cell to cell spreading of these viruses. Variations in this gene have been associated with differences in the severity of multiple sclerosis. Alternate transcriptional splice variants, encoding different isoforms, have been characterized. [provided by RefSeq, Jul 2008]



[View online »](#)

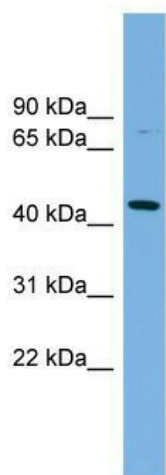
Synonyms: CD112; HVEB; PRR2; PVRR2

Note: Immunogen Sequence Homology: Pig: 100%; Human: 100%; Mouse: 93%

Protein Families: Druggable Genome, Transmembrane

Protein Pathways: Adherens junction, Cell adhesion molecules (CAMs)

Product images:



WB Suggested Anti-PVRL2 Antibody Titration: 0.2-1 ug/ml; Positive Control: OVCAR-3 cell lysate