

Product datasheet for **TA342533**

THG1L Rabbit Polyclonal Antibody

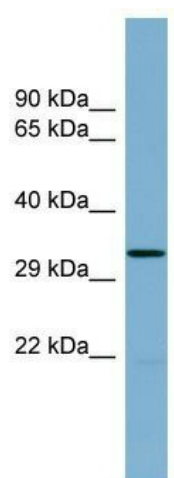
Product data:

Product Type:	Primary Antibodies
Applications:	WB
Recommended Dilution:	WB
Reactivity:	Human
Host:	Rabbit
Isotype:	IgG
Clonality:	Polyclonal
Immunogen:	The immunogen for anti-THG1L antibody: synthetic peptide directed towards the middle region of human THG1L. Synthetic peptide located within the following region: DCHINNLNTVFWALIQSGLTPVQAQGRLQGTLAADKNEILFSEFNINY
Formulation:	Liquid. Purified antibody supplied in 1x PBS buffer with 0.09% (w/v) sodium azide and 2% sucrose. <i>Note that this product is shipped as lyophilized powder to China customers.</i>
Conjugation:	Unconjugated
Storage:	Store at -20°C as received.
Stability:	Stable for 12 months from date of receipt.
Predicted Protein Size:	35 kDa
Gene Name:	tRNA-histidine guanylyltransferase 1 like
Database Link:	NP_060342 Entrez Gene 54974 Human Q9NWX6
Background:	THG1L adds a GMP to the 5'-end of tRNA(His) after transcription and RNase P cleavage.
Synonyms:	hTHG1; ICF45; IHG-1
Note:	Immunogen Sequence Homology: Human: 100%; Rabbit: 100%; Dog: 93%; Horse: 93%; Bovine: 93%; Pig: 91%; Rat: 86%; Guinea pig: 86%; Yeast: 83%; Zebrafish: 83%; Mouse: 79%



[View online »](#)

Product images:



WB Suggested Anti-THG1L Antibody Titration: 0.2-1 ug/ml; ELISA Titer: 1: 312500; Positive Control: Human Spleen