

Product datasheet for **TA342532**

THG1L Rabbit Polyclonal Antibody

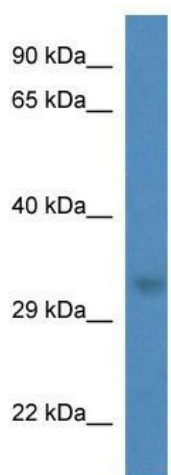
Product data:

Product Type:	Primary Antibodies
Applications:	WB
Recommended Dilution:	WB
Reactivity:	Mouse
Host:	Rabbit
Isotype:	IgG
Clonality:	Polyclonal
Immunogen:	The immunogen for anti-Thg1l antibody: synthetic peptide corresponding to a region of Mouse. Synthetic peptide located within the following region: RNFHRFAEEHNFAKPNDSRALHMTKCAQTMEELEDIVIAYGQSDEYSF
Formulation:	Liquid. Purified antibody supplied in 1x PBS buffer with 0.09% (w/v) sodium azide and 2% sucrose. <i>Note that this product is shipped as lyophilized powder to China customers.</i>
Conjugation:	Unconjugated
Storage:	Store at -20°C as received.
Stability:	Stable for 12 months from date of receipt.
Predicted Protein Size:	35 kDa
Gene Name:	tRNA-histidine guanylyltransferase 1 like
Database Link:	NP_060342 Entrez Gene 66628 Mouse Q9NWX6
Background:	Adds a GMP to the 5'-end of tRNA(His) after transcription and RNase P cleavage. This step is essential for proper recognition of the tRNA and for the fidelity of protein synthesis.
Synonyms:	hTHG1; ICF45; IHG-1
Note:	Immunogen Sequence Homology: Dog: 100%; Rat: 100%; Horse: 100%; Human: 100%; Rabbit: 100%; Pig: 93%; Mouse: 93%; Guinea pig: 93%; Yeast: 92%; Bovine: 86%; Zebrafish: 82%



[View online »](#)

Product images:



WB Suggested Anti-Thg1l Antibody; Titration: 1.0 ug/ml; Positive Control: Mouse Spleen