

Product datasheet for **TA342531**

PLEKHO1 Rabbit Polyclonal Antibody

Product data:

Product Type:	Primary Antibodies
Applications:	WB
Recommended Dilution:	WB
Reactivity:	Human
Host:	Rabbit
Isotype:	IgG
Clonality:	Polyclonal
Immunogen:	The immunogen for anti-PLEKHO1 antibody: synthetic peptide directed towards the N terminal of human PLEKHO1. Synthetic peptide located within the following region: MMKKNNSAKRGPQDGNQQPAPPEKVGWVRKFCGKGFREIWKNRYVVLKG
Formulation:	Liquid. Purified antibody supplied in 1x PBS buffer with 0.09% (w/v) sodium azide and 2% sucrose. <i>Note that this product is shipped as lyophilized powder to China customers.</i>
Conjugation:	Unconjugated
Storage:	Store at -20°C as received.
Stability:	Stable for 12 months from date of receipt.
Predicted Protein Size:	46 kDa
Gene Name:	pleckstrin homology domain containing O1
Database Link:	NP_057358 Entrez Gene 51177 Human Q53GL0



[View online »](#)

Background:

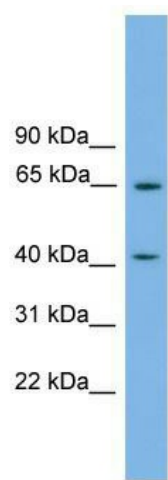
PLEKHO1 plays a role in the regulation of the actin cytoskeleton through its interactions with actin capping protein (CP). PLEKHO1 may function to target CK2 to the plasma membrane thereby serving as an adapter to facilitate the phosphorylation of CP by protein kinase 2 (CK2). PLEKHO1 appears to target ATM to the plasma membrane. PLEKHO1 appears to also inhibit tumor cell growth by inhibiting AKT-mediated cell-survival. PLEKHO1 is also implicated in PI3K-regulated muscle differentiation, the regulation of AP-1 activity (plasma membrane bound AP-1 regulator that translocates to the nucleus) and the promotion of apoptosis induced by tumor necrosis factor TNF. When bound to PKB, it inhibits it probably by decreasing PKB level of phosphorylation.

Synonyms:

CKIP-1; CKIP1; JBP; OC120

Note:

Immunogen Sequence Homology: Human: 100%; Pig: 86%; Bovine: 86%; Rat: 82%

Product images:

WB Suggested Anti-PLEKHO1 Antibody Titration:
0.2-1 ug/ml; ELISA Titer: 1: 62500; Positive
Control: COLO205 cell lysate