

## Product datasheet for **TA342530**

### nephrinectin (NPNT) Rabbit Polyclonal Antibody

#### Product data:

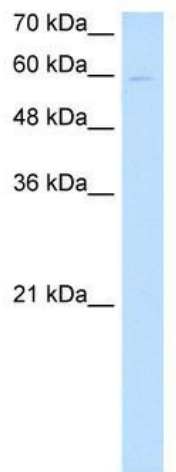
Product Type:	Primary Antibodies
Applications:	WB
Recommended Dilution:	WB
Reactivity:	Human
Host:	Rabbit
Isotype:	IgG
Clonality:	Polyclonal
Immunogen:	The immunogen for anti-NPNT antibody: synthetic peptide directed towards the middle region of human NPNT. Synthetic peptide located within the following region: TTGLTTIAPAASTPPGGITVDNRVQTDPPKPRGDVFIPRQPSNDLFEIFE
Formulation:	Liquid. Purified antibody supplied in 1x PBS buffer with 0.09% (w/v) sodium azide and 2% sucrose. <i>Note that this product is shipped as lyophilized powder to China customers.</i>
Conjugation:	Unconjugated
Storage:	Store at -20°C as received.
Stability:	Stable for 12 months from date of receipt.
Predicted Protein Size:	62 kDa
Gene Name:	nephrinectin
Database Link:	<a href="#">NP_001028219</a> <a href="#">Entrez Gene 255743 Human</a> <a href="#">Q6UXI9</a>
Background:	Functional ligand of integrin alpha-8/beta-1 in kidney development. Regulates the expression of GDNF with integrin alpha-8/beta-1 which is essential for kidney development. May also play a role in the development and function of various tissues, regulating cell adhesion, spreading and survival through the binding of several integrins.
Synonyms:	EGFL6L; POEM
Note:	Immunogen Sequence Homology: Dog: 100%; Pig: 100%; Rat: 100%; Horse: 100%; Human: 100%; Mouse: 100%; Rabbit: 100%; Guinea pig: 100%; Bovine: 93%



[View online »](#)

Protein Families: Druggable Genome

### Product images:



WB Suggested Anti-NPNT Antibody Titration: 0.2-1 ug/ml; Positive Control: HepG2 cell lysate