

## Product datasheet for TA342528

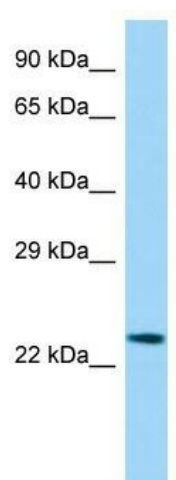
### ETV3L Rabbit Polyclonal Antibody

#### Product data:

Product Type:	Primary Antibodies
Applications:	WB
Recommended Dilution:	WB
Reactivity:	Rat
Host:	Rabbit
Isotype:	IgG
Clonality:	Polyclonal
Immunogen:	The immunogen for anti-Etv3l antibody is: synthetic peptide directed towards the middle region of Rat Etv3l. Synthetic peptide located within the following region: SGLAFPDWAYKAESSPGSRQIQLWHFILELLQKEEFRHVIAWQQGEYGEF
Formulation:	Liquid. Purified antibody supplied in 1x PBS buffer with 0.09% (w/v) sodium azide and 2% sucrose.
Conjugation:	Unconjugated
Storage:	Store at -20°C as received.
Stability:	Stable for 12 months from date of receipt.
Predicted Protein Size:	22 kDa
Gene Name:	ETS variant 3 like
Database Link:	<a href="#">NP_001004341</a> <a href="#">Entrez Gene 499651 Rat Q6ZN32</a>
Background:	The function of this protein remains unknown.
Synonyms:	FLJ16478
Note:	Immunogen Sequence Homology: Dog: 100%; Pig: 100%; Rat: 100%; Horse: 100%; Human: 100%; Mouse: 100%; Bovine: 100%; Zebrafish: 100%; Guinea pig: 100%; Rabbit: 93%; Yeast: 91%



[View online »](#)

**Product images:**

Host: Rabbit; Target Name: Etv3l; Sample Tissue:  
Rat Spleen lysates; Antibody Dilution: 1.0 ug/ml