

Product datasheet for **TA342527**

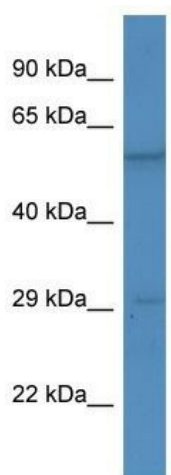
BSX Rabbit Polyclonal Antibody

Product data:

Product Type:	Primary Antibodies
Applications:	WB
Recommended Dilution:	WB
Reactivity:	Mouse
Host:	Rabbit
Isotype:	IgG
Clonality:	Polyclonal
Immunogen:	The immunogen for anti-BSX antibody is: synthetic peptide directed towards the C-terminal region of Human BSX. Synthetic peptide located within the following region: APDGPESPEGSPRGSEAATAAEARLSLPAGPFVLTEPEDEVDIGDEGELG
Formulation:	Liquid. Purified antibody supplied in 1x PBS buffer with 0.09% (w/v) sodium azide and 2% sucrose.
Conjugation:	Unconjugated
Storage:	Store at -20°C as received.
Stability:	Stable for 12 months from date of receipt.
Predicted Protein Size:	25 kDa
Gene Name:	brain specific homeobox
Database Link:	NP_001091639 Entrez Gene 244813 Mouse Q3C1V8
Background:	Bsx is a DNA binding protein that function as transcriptional activator. It is essential for normal postnatal growth and nursing and an essential factor for neuronal neuropeptide Y and agouti-related peptide function and locomotory behavior in the control of energy balance.
Synonyms:	BSX1
Note:	Immunogen Sequence Homology: Dog: 100%; Pig: 100%; Horse: 100%; Human: 100%; Bovine: 100%; Rabbit: 100%; Rat: 93%; Mouse: 93%; Guinea pig: 93%



[View online »](#)

Product images:


Host: Rabbit

Target Name: Bsx

Sample Tissue: Mouse Kidney Lysate

Antibody Dilution: 1.0µg/ml

Host: Rabbit; Target Name: Bsx; Sample Tissue: Mouse Kidney lysates; Antibody Dilution: 1.0 ug/ml