

## Product datasheet for TA342525

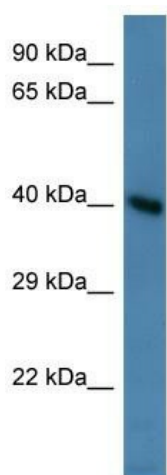
### HMX3 Rabbit Polyclonal Antibody

#### Product data:

Product Type:	Primary Antibodies
Applications:	WB
Recommended Dilution:	WB
Reactivity:	Mouse
Host:	Rabbit
Isotype:	IgG
Clonality:	Polyclonal
Immunogen:	The immunogen for anti-Hmx3 antibody is: synthetic peptide directed towards the middle region of Mouse Hmx3. Synthetic peptide located within the following region: PRPEASEKALLRDSSPASGTDRDSPEPLLKADPDHKELDSKSPDEIILEE
Formulation:	Liquid. Purified antibody supplied in 1x PBS buffer with 0.09% (w/v) sodium azide and 2% sucrose.
Conjugation:	Unconjugated
Storage:	Store at -20°C as received.
Stability:	Stable for 12 months from date of receipt.
Predicted Protein Size:	39 kDa
Gene Name:	H6 family homeobox 3
Database Link:	<a href="#">NP_001099044</a> <a href="#">Entrez Gene 15373 Mouse</a> <a href="#">A6NHT5</a>
Background:	Hmx3 is a transcription factor involved in specification of neuronal cell types and which is required for inner ear and hypothalamus development. It binds to the 5'-CAAGTG-3' core sequence and controls semicircular canal formation in the inner ear. It is also required for hypothalamic/pituitary axis of the CNS.
Synonyms:	NKX-5.1; Nkx5-1; NKX5.1
Note:	Immunogen Sequence Homology: Dog: 100%; Pig: 100%; Rat: 100%; Horse: 100%; Human: 100%; Mouse: 100%; Bovine: 100%; Guinea pig: 100%


[View online »](#)

## Product images:



Host: Rabbit  
Target Name: Hmx3  
Sample Tissue: Mouse Heart Lysate  
Antibody Dilution: 1.0 µg/ml

Host: Rabbit; Target Name: Hmx3; Sample Tissue: Mouse Heart lysates; Antibody Dilution: 1.0 ug/ml