

## Product datasheet for **TA342524**

### HMx3 Rabbit Polyclonal Antibody

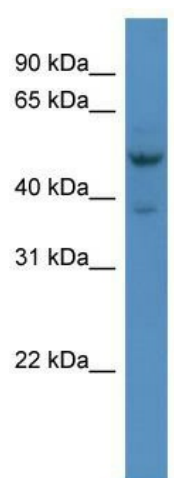
#### Product data:

Product Type:	Primary Antibodies
Applications:	WB
Recommended Dilution:	WB
Reactivity:	Mouse
Host:	Rabbit
Isotype:	IgG
Clonality:	Polyclonal
Immunogen:	The immunogen for anti-Hmx3 antibody: synthetic peptide corresponding to a region of Mouse. Synthetic peptide located within the following region: RDSPEPLLKADPDHKELDSKSPDEIILEESDSEEGKKEGEAVPGAAGTTV
Formulation:	Liquid. Purified antibody supplied in 1x PBS buffer with 0.09% (w/v) sodium azide and 2% sucrose.
Conjugation:	Unconjugated
Storage:	Store at -20°C as received.
Stability:	Stable for 12 months from date of receipt.
Predicted Protein Size:	38 kDa
Gene Name:	H6 family homeobox 3
Database Link:	<a href="#">NP_001099044</a> <a href="#">Entrez Gene 15373 Mouse</a> <a href="#">A6NHT5</a>
Background:	The function of Hmx3 remains unknown.
Synonyms:	NKX-5.1; Nkx5-1; NKX5.1
Note:	Immunogen Sequence Homology: Human: 100%; Dog: 93%; Pig: 93%; Rat: 93%; Horse: 93%; Mouse: 93%; Guinea pig: 93%; Bovine: 91%; Yeast: 90%; Zebrafish: 75%



[View online »](#)

## Product images:



WB Suggested Anti-Hmx3 Antibody Titration: 0.2-1 ug/ml; ELISA Titer: 1: 12500; Positive Control: Mouse Liver