

Product datasheet for **TA342518**

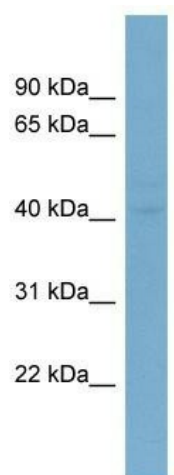
LASS6 (CERS6) Rabbit Polyclonal Antibody

Product data:

Product Type:	Primary Antibodies
Applications:	WB
Recommended Dilution:	WB
Reactivity:	Human
Host:	Rabbit
Isotype:	IgG
Clonality:	Polyclonal
Immunogen:	The immunogen for anti-LASS6 antibody: synthetic peptide directed towards the N terminal of human LASS6. Synthetic peptide located within the following region: MAGILAWFWNERFWLPHNVTWADLKNTEEATFPQAEDLYLAFPLAFCIFM
Formulation:	Liquid. Purified antibody supplied in 1x PBS buffer with 0.09% (w/v) sodium azide and 2% sucrose. <i>Note that this product is shipped as lyophilized powder to China customers.</i>
Conjugation:	Unconjugated
Storage:	Store at -20°C as received.
Stability:	Stable for 12 months from date of receipt.
Predicted Protein Size:	45 kDa
Gene Name:	ceramide synthase 6
Database Link:	NP_982288 Entrez Gene 253782 Human Q6ZMG9
Background:	May be involved in sphingolipid synthesis or its regulation.
Synonyms:	CERS5; LASS6
Note:	Immunogen Sequence Homology: Pig: 100%; Rat: 100%; Horse: 100%; Human: 100%; Mouse: 100%; Bovine: 100%; Guinea pig: 100%; Dog: 93%; Zebrafish: 79%
Protein Families:	Druggable Genome, Transmembrane



[View online »](#)

Product images:

WB Suggested Anti-LASS6 Antibody Titration: 0.2-1 ug/ml; ELISA Titer: 1: 12500; Positive Control: COLO205 cell lysate; CERS6 is strongly supported by BioGPS gene expression data to be expressed in Human COLO205 cells