

Product datasheet for **TA342515**

MAFA Rabbit Polyclonal Antibody

Product data:

| | |
|-------------------------|---|
| Product Type: | Primary Antibodies |
| Applications: | WB |
| Recommended Dilution: | WB |
| Reactivity: | Human, Mouse |
| Host: | Rabbit |
| Isotype: | IgG |
| Clonality: | Polyclonal |
| Immunogen: | The immunogen for anti-MAFA antibody: synthetic peptide directed towards the N terminal of human MAFA. Synthetic peptide located within the following region: KPALEDLYWMSGYQHHLNPEALNLTPEDAVEALIGSGHHGAHHGAHPAA |
| Formulation: | Liquid. Purified antibody supplied in 1x PBS buffer with 0.09% (w/v) sodium azide and 2% sucrose. <i>Note that this product is shipped as lyophilized powder to China customers.</i> |
| Conjugation: | Unconjugated |
| Storage: | Store at -20°C as received. |
| Stability: | Stable for 12 months from date of receipt. |
| Predicted Protein Size: | 37 kDa |
| Gene Name: | MAF bZIP transcription factor A |
| Database Link: | NP_963883 Entrez Gene 378435 Mouse Entrez Gene 389692 Human Q8NHW3 |
| Background: | MAFA is a transcription factor that binds RIPE3b, a conserved enhancer element that regulates pancreatic beta cell-specific expression of the insulin gene (INS; MIM 176730) (Olbrot et al., 2002 [PubMed 12011435]). [supplied by OMIM, Mar 2008]. Sequence Note: The RefSeq transcript and protein were derived from genomic sequence to make the sequence consistent with the reference genome assembly. The genomic coordinates used for the transcript record were based on alignments. Publication Note: This RefSeq record includes a subset of the publications that are available for this gene. Please see the Gene record to access additional publications. |



[View online »](#)

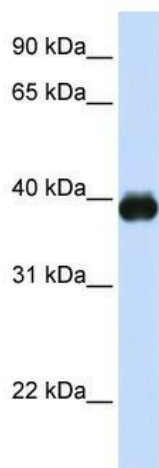
Synonyms: hMafA; RIPE3b1

Note: Immunogen Sequence Homology: Pig: 100%; Rat: 100%; Human: 100%; Mouse: 100%; Bovine: 100%; Guinea pig: 93%; Zebrafish: 83%; Dog: 79%

Protein Families: Druggable Genome, ES Cell Differentiation/IPS

Protein Pathways: Maturity onset diabetes of the young, Type II diabetes mellitus

Product images:



WB Suggested Anti-MAFA Antibody Titration: 0.2-1 ug/ml; ELISA Titer: 1: 312500; Positive Control: Human Placenta