

Product datasheet for **TA342513**

Growth Arrest Specific Protein 7 (GAS7) Rabbit Polyclonal Antibody

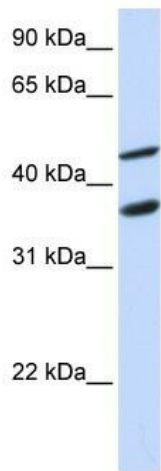
Product data:

Product Type:	Primary Antibodies
Applications:	WB
Recommended Dilution:	WB
Reactivity:	Human
Host:	Rabbit
Isotype:	IgG
Clonality:	Polyclonal
Immunogen:	The immunogen for anti-GAS7 antibody: synthetic peptide directed towards the N terminal of human GAS7. Synthetic peptide located within the following region: SGARCRTLYPFSGERHGGQLRFAAGELITLLQVPDGGWWEKEKEDGLRGW
Formulation:	Liquid. Purified antibody supplied in 1x PBS buffer with 0.09% (w/v) sodium azide and 2% sucrose. <i>Note that this product is shipped as lyophilized powder to China customers.</i>
Conjugation:	Unconjugated
Storage:	Store at -20°C as received.
Stability:	Stable for 12 months from date of receipt.
Predicted Protein Size:	54 kDa
Gene Name:	growth arrest specific 7
Database Link:	NP_958839 Entrez Gene 8522 Human O60861
Background:	Growth arrest-specific 7 is expressed primarily in terminally differentiated brain cells and predominantly in mature cerebellar Purkinje neurons. GAS7 plays a putative role in neuronal development. Several transcript variants encoding proteins which vary in the N-terminus have been described. [provided by RefSeq, Jul 2008]
Synonyms:	GAS7; MLL
Note:	Immunogen Sequence Homology: Pig: 100%; Human: 100%
Protein Families:	Transcription Factors



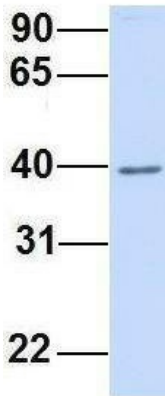
[View online »](#)

Product images:



WB Suggested Anti-GAS7 Antibody Titration: 0.2-1 ug/ml; ELISA Titer: 1: 312500; Positive Control: MCF7 cell lysate

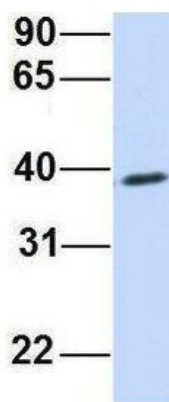
GAS7



Rabbit Anti-GAS7
 Sample Type: Human Fetal Brain
 Antibody Concentration: 1ug/mL

Host: Rabbit; Target Name: GAS7; Sample Tissue: Human Fetal Brain; Antibody Dilution: 1.0 ug/ml

GAS7



Rabbit Anti-GAS7
Sample Type: Human 721_B
Antibody Concentration: 1ug/mL

Host: Rabbit; Target Name: GAS7; Sample Tissue: Human 721_B; Antibody Dilution: 1.0 ug/ml; There is BioGPS gene expression data showing that GAS7 is expressed in 721_B