

Product datasheet for **TA342511**

ZNF169 Rabbit Polyclonal Antibody

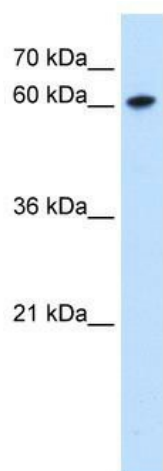
Product data:

Product Type:	Primary Antibodies
Applications:	IHC, WB
Recommended Dilution:	WB, IHC
Reactivity:	Human
Host:	Rabbit
Isotype:	IgG
Clonality:	Polyclonal
Immunogen:	The immunogen for anti-ZNF169 antibody: synthetic peptide directed towards the middle region of human ZNF169. Synthetic peptide located within the following region: HQRTHTGEKPYLCPECGRRFSQKASLSIHQRKHSGEKPYVCRECGRHFRY
Formulation:	Liquid. Purified antibody supplied in 1x PBS buffer with 0.09% (w/v) sodium azide and 2% sucrose.
Conjugation:	Unconjugated
Storage:	Store at -20°C as received.
Stability:	Stable for 12 months from date of receipt.
Predicted Protein Size:	68 kDa
Gene Name:	zinc finger protein 169
Database Link:	NP_919301 Entrez Gene 169841 Human Q14929
Background:	May be involved in transcriptional regulation.
Synonyms:	MGC51961
Note:	Immunogen Sequence Homology: Dog: 100%; Pig: 100%; Horse: 100%; Human: 100%; Rat: 92%; Mouse: 92%; Bovine: 92%; Rabbit: 92%; Guinea pig: 92%
Protein Families:	Transcription Factors

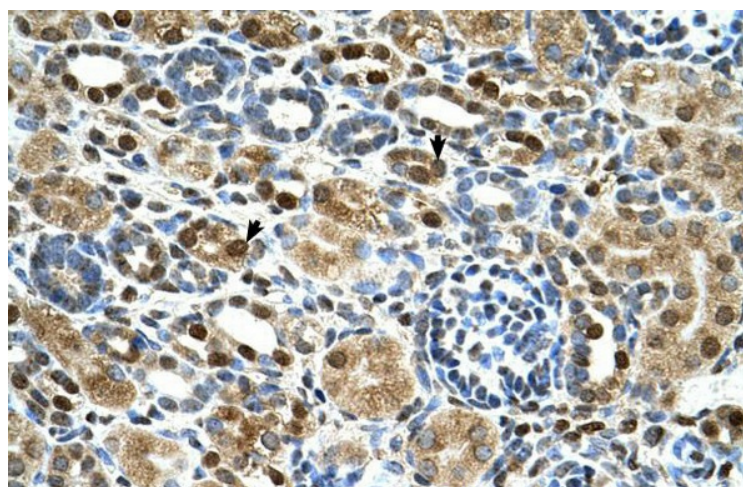


[View online »](#)

Product images:



WB Suggested Anti-ZNF169 Antibody Titration:
0.25 ug/ml; Positive Control: HepG2 cell lysate



Human kidney