

Product datasheet for **TA342509**

ZNF367 Rabbit Polyclonal Antibody

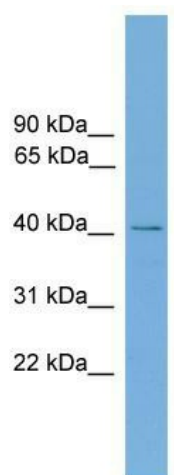
Product data:

Product Type:	Primary Antibodies
Applications:	WB
Recommended Dilution:	WB
Reactivity:	Human
Host:	Rabbit
Isotype:	IgG
Clonality:	Polyclonal
Immunogen:	The immunogen for anti-ZNF367 antibody: synthetic peptide directed towards the middle region of human ZNF367. Synthetic peptide located within the following region: DTVRDLINERGEHSSSRIRCNICNRVFPREKSLQAHKRTHTGERPYLCDYP
Formulation:	Liquid. Purified antibody supplied in 1x PBS buffer with 0.09% (w/v) sodium azide and 2% sucrose.
Conjugation:	Unconjugated
Storage:	Store at -20°C as received.
Stability:	Stable for 12 months from date of receipt.
Predicted Protein Size:	38 kDa
Gene Name:	zinc finger protein 367
Database Link:	NP_710162 Entrez Gene 195828 Human Q7RTV3
Background:	ZNF367 is a transcriptional activator. Isoform 1 may be involved in transcriptional activation of erythroid genes.
Synonyms:	AFF29; CDC14B; ZFF29
Note:	Immunogen Sequence Homology: Dog: 100%; Pig: 100%; Rat: 100%; Horse: 100%; Human: 100%; Mouse: 100%; Bovine: 100%; Rabbit: 100%; Zebrafish: 100%; Guinea pig: 100%
Protein Families:	Transcription Factors



[View online »](#)

Product images:



WB Suggested Anti-ZNF367 Antibody Titration:
0.2-1 ug/ml; ELISA Titer: 1: 312500; Positive
Control: PANC1 cell lysate