

Product datasheet for TA342507

ZNF367 Rabbit Polyclonal Antibody

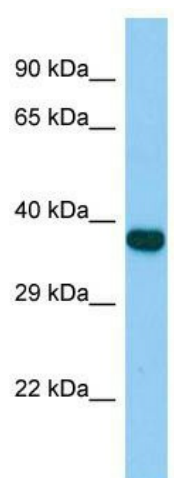
Product data:

Product Type:	Primary Antibodies
Applications:	WB
Recommended Dilution:	WB
Reactivity:	Rat
Host:	Rabbit
Isotype:	IgG
Clonality:	Polyclonal
Immunogen:	The immunogen for anti-Zfp367 antibody is: synthetic peptide directed towards the C-terminal region of Rat Zfp367. Synthetic peptide located within the following region: AAEWLAKYWEMREQRTPTLKGKLVQKADQEQQDPLEYLQSDEEDDEKSGA
Formulation:	Liquid. Purified antibody supplied in 1x PBS buffer with 0.09% (w/v) sodium azide and 2% sucrose. <i>Note that this product is shipped as lyophilized powder to China customers.</i>
Storage:	Store at -20°C as received.
Stability:	Stable for 12 months from date of receipt.
Predicted Protein Size:	37 kDa
Gene Name:	zinc finger protein 367
Database Link:	NP_710162 Entrez Gene 195828 Human
Background:	Transcriptional activator. May be involved in transcriptional activation of erythroid genes.
Synonyms:	AFF29; CDC14B; ZFF29
Note:	Immunogen Sequence Homology: Pig: 100%; Rat: 100%; Horse: 100%; Human: 100%; Mouse: 100%; Bovine: 100%; Rabbit: 100%; Dog: 93%; Guinea pig: 85%; Zebrafish: 79%
Protein Families:	Transcription Factors



[View online »](#)

Product images:



Host: Rabbit; Target Name: Zfp367; Sample
Tissue: Rat Spleen lysates; Antibody Dilution: 1.0
ug/ml