

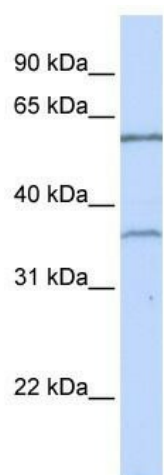
## Product datasheet for **TA342502**

### TBX15 Rabbit Polyclonal Antibody

#### Product data:

Product Type:	Primary Antibodies
Applications:	WB
Recommended Dilution:	WB
Reactivity:	Human
Host:	Rabbit
Isotype:	IgG
Clonality:	Polyclonal
Immunogen:	The immunogen for anti-TBX15 antibody: synthetic peptide directed towards the C terminal of human TBX15. Synthetic peptide located within the following region: SSYNAFSLHNPYNLYGYNFPTSPRLAASPEKLSASQSTLLCSSPSNGAFG
Formulation:	Liquid. Purified antibody supplied in 1x PBS buffer with 0.09% (w/v) sodium azide and 2% sucrose.
Conjugation:	Unconjugated
Storage:	Store at -20°C as received.
Stability:	Stable for 12 months from date of receipt.
Predicted Protein Size:	55 kDa
Gene Name:	T-box 15
Database Link:	<a href="#">NP_689593</a> <a href="#">Entrez Gene 6913 Human</a> <a href="#">Q96SF7</a>
Background:	This gene belongs to the T-box family of genes, which encode a phylogenetically conserved family of transcription factors that regulate a variety of developmental processes. All these genes contain a common T-box DNA-binding domain. Mutations in this gene are associated with Cousin syndrome. [provided by RefSeq, Oct 2009]
Synonyms:	TBX14
Note:	Immunogen Sequence Homology: Dog: 100%; Pig: 100%; Rat: 100%; Horse: 100%; Human: 100%; Mouse: 100%; Bovine: 100%; Rabbit: 100%; Guinea pig: 100%; Zebrafish: 93%


[View online »](#)

**Product images:**


WB Suggested Anti-TBX15 Antibody Titration: 0.2-1 ug/ml; ELISA Titer: 1: 312500; Positive Control: Jurkat cell lysate