

Product datasheet for **TA342498**

ZNF18 Rabbit Polyclonal Antibody

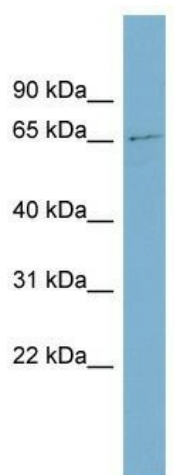
Product data:

Product Type:	Primary Antibodies
Applications:	WB
Recommended Dilution:	WB
Reactivity:	Human
Host:	Rabbit
Isotype:	IgG
Clonality:	Polyclonal
Immunogen:	The immunogen for anti-ZNF18 antibody: synthetic peptide directed towards the middle region of human ZNF18. Synthetic peptide located within the following region: LSPQERISEKQLGQHLPNPHSGEMSTMWLEEKRETSQKGQPRAPMAQKLP
Formulation:	Liquid. Purified antibody supplied in 1x PBS buffer with 0.09% (w/v) sodium azide and 2% sucrose.
Conjugation:	Unconjugated
Storage:	Store at -20°C as received.
Stability:	Stable for 12 months from date of receipt.
Predicted Protein Size:	62 kDa
Gene Name:	zinc finger protein 18
Database Link:	NP_653281 Entrez Gene 7566 Human P17022
Background:	May be involved in transcriptional regulation.
Synonyms:	HDSG1; KOX11; Zfp535; ZKSCAN6; ZNF535; ZSCAN38
Note:	Immunogen Sequence Homology: Human: 100%; Pig: 93%; Rat: 93%; Guinea pig: 93%; Dog: 86%; Mouse: 85%; Horse: 79%
Protein Families:	Transcription Factors



[View online »](#)

Product images:



WB Suggested Anti-ZNF18 Antibody Titration: 0.2-1 ug/ml; ELISA Titer: 1: 62500; Positive Control: Human Stomach